



# GC CAPILLARY COLUMN

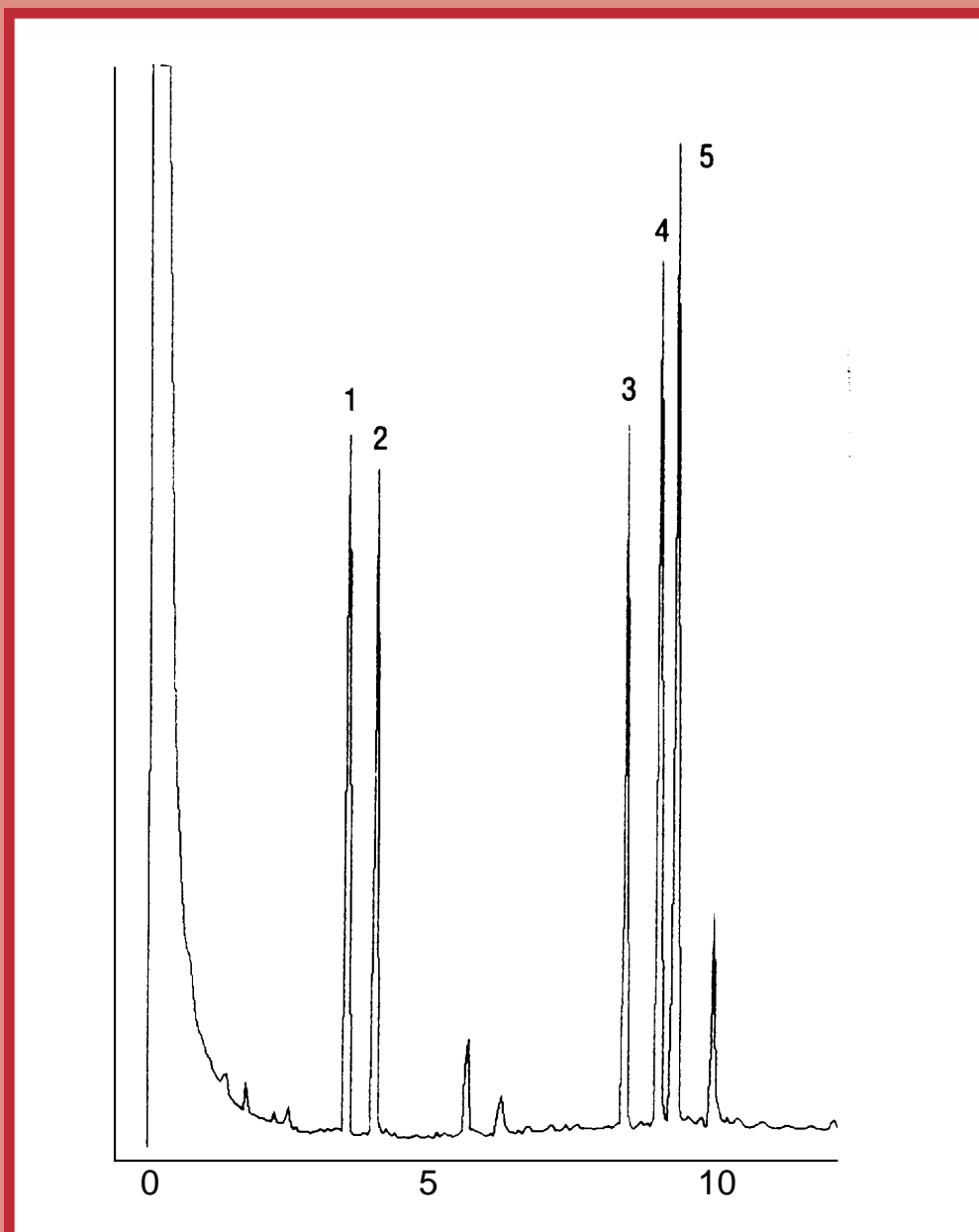
## APPLICATIONS: Clinical/ Toxicological

### *Tricyclic Antidepressants*

**COLUMN:** 007-17, (50% Phenyl) Methylpolysiloxane  
25M. x 0.25mm I.D. x 0.25 $\mu$ m film  
Cat. No.: 007-17-25-0.25F

**Temperature:** 220° (2 min. hold) (10°/min.) -260°C  
**Injector:** 250°C  
**Detector:** 285°C, FID  
**Carrier Gas:** 28 cm/sec., Helium

- |                     |                 |                |
|---------------------|-----------------|----------------|
| 1. Hydroxyphenamate | 3. Nortripyline | 5. Desipramine |
| 2. Meprobamate      | 4. Imipramine   |                |



# QUADREX



PO Box 3881, Woodbridge, CT 06525 • (203) 393-3112 • FAX (203) 393-0391  
TOLLFREE: 800-275-7033 • E-MAIL: tech@quadrexcorp.com • WEB: www.quadrexcorp.com