



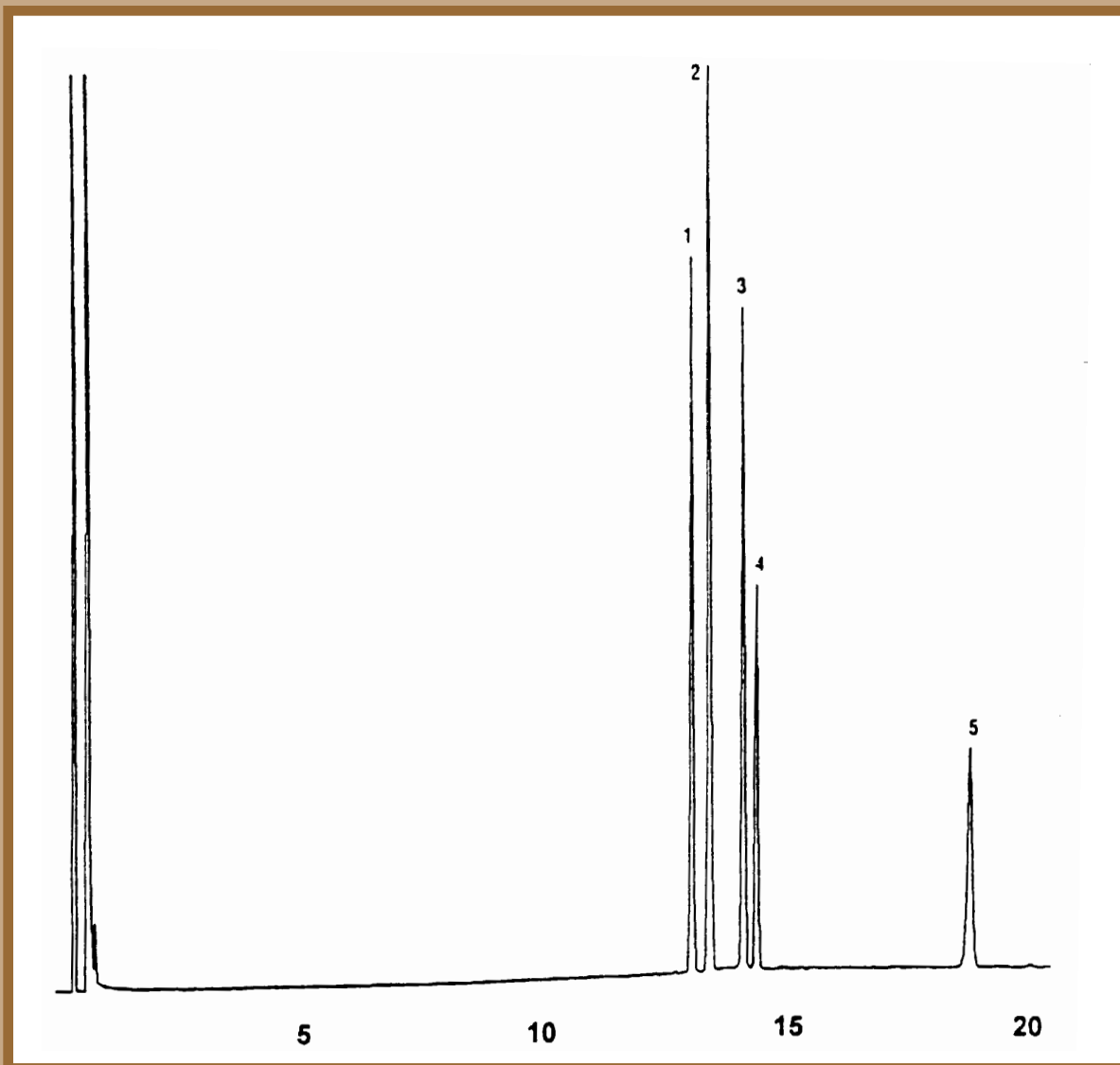
# GC CAPILLARY COLUMN APPLICATIONS: Steroids

## Testosterone Derivative Steroids

**COLUMN:** 007-5,\* (5% Phenyl)  
Methylpolysiloxane  
15M. x 0.53mm I.D. x 1.0 $\mu$ m film  
Cat. No.: 007-5-15V-1.0F

**Temperature:** 150° (10°/min.) - 280°C  
**Injector:** 300°C  
**Detector:** 310°C, FID  
**Carrier Gas:** 33 cm/sec., Helium

- |  |                                     |
|--|-------------------------------------|
| 1. etiocholan-17 $\beta$ -ol-3-one           | 4. 17 $\alpha$ -methyl testosterone |
| 2. 5 $\alpha$ -androsen-17 $\beta$ -ol-3-one | 5. 4-chloro-testosterone-17         |
| 3. testosterone                              |                                     |



**QUADREX**



PO Box 3881, Woodbridge, CT 06525 • (203) 393-3112 • FAX (203) 393-0391  
TOLLFREE: 800-275-7033 • E-MAIL: tech@quadrexcorp.com • WEB: www.quadrexcorp.com