



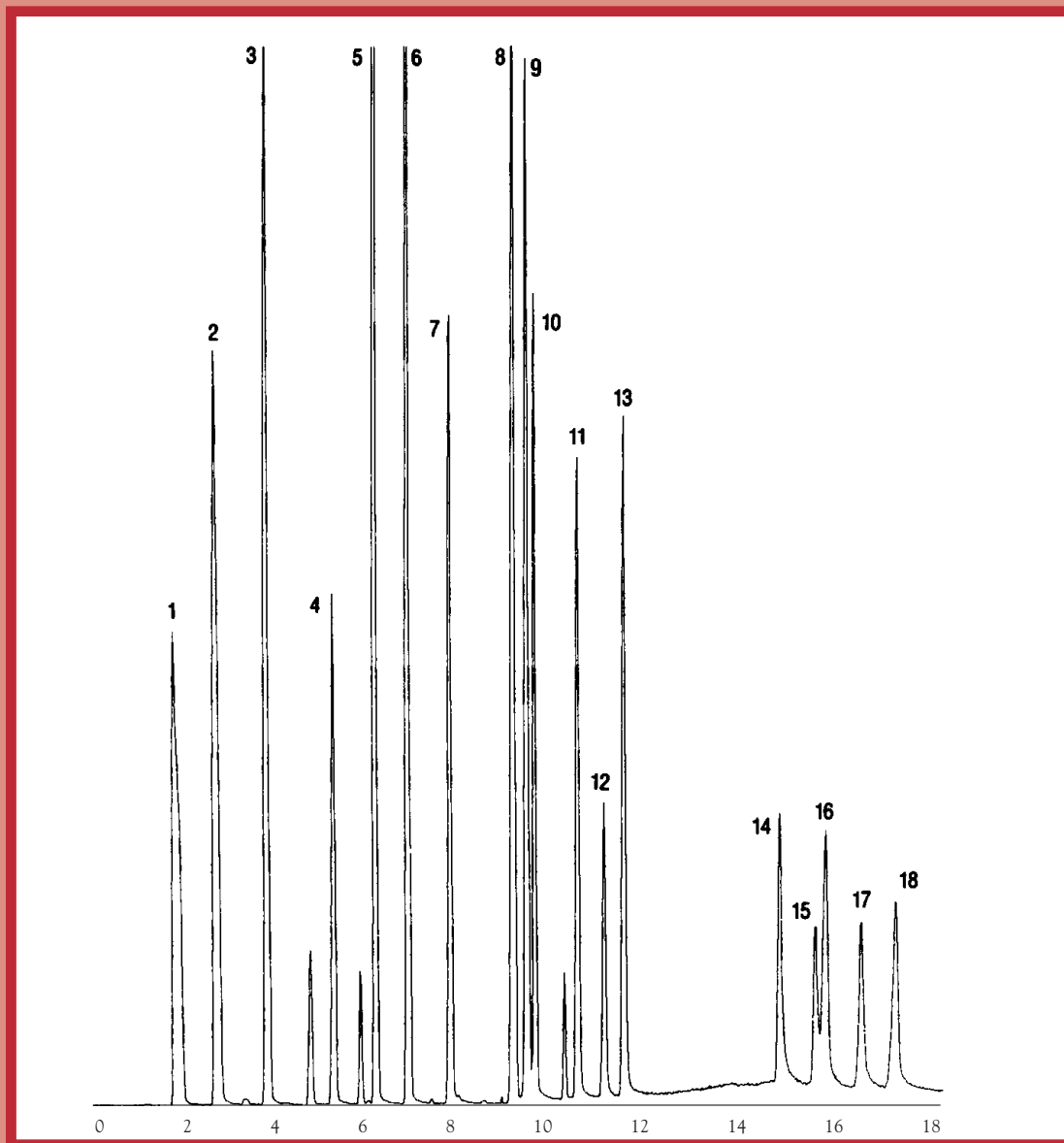
GC CAPILLARY COLUMN APPLICATIONS: Clinical/ Toxicological

Schedule IV Depressants

Column: 007-1701, (14% Cyanopropylphenyl) Methylpolysiloxane
30M. x 0.25mm I.D. x 0.25µm film
Cat. No.: 007-1701-30-0.25F

Temperature: 145°(12°/min.) -290°C
Injector: 250°C
Detector: MSD
Carrier Gas: 28 cm/sec., Helium

- | | | |
|---------------------------------|----------------------|--------------------------------|
| 1. Ethosuximide | 7. n-Normethsuximide | 14. 10,11-Dihydrocarbamazepine |
| 2. a-Methyl-a-Propylsuccinimide | 8. Mephentyoin | 15. Carbamazepine |
| 3. Metharbital | 9. Ethotoin | 16. Primidone |
| 4. Barbitol | 10. Mephobarbital | 17. 5,5'-Diphenylhydantoin |
| 5. Mephuximide | 11. PEMA | 18. 4-Methylprimidone |
| 6. Phensuximide | 12. Phenobarbital | |
| | 13. Methyl PEMA | |



QUADREX



PO Box 3881, Woodbridge, CT 06525 • (203) 393-3112 • FAX (203) 393-0391
TOLLFREE: 800-275-7033 • E-MAIL: tech@quadrexcorp.com • WEB: www.quadrexcorp.com