



# GC CAPILLARY COLUMN

## APPLICATIONS: **Clinical/ Toxicological**

### *Schedule II Stimulants*

**COLUMN:** 007-35\* (35% Phenyl) Methylpolysiloxane  
25M. x 0.25mm I.D. x 0.25 $\mu$ m film  
Cat. No.: 007-35-25-0.25F

**Temperature:** 100° (3.0 min. hold) (10°/min.) -280°C

**Injector:** 250°C

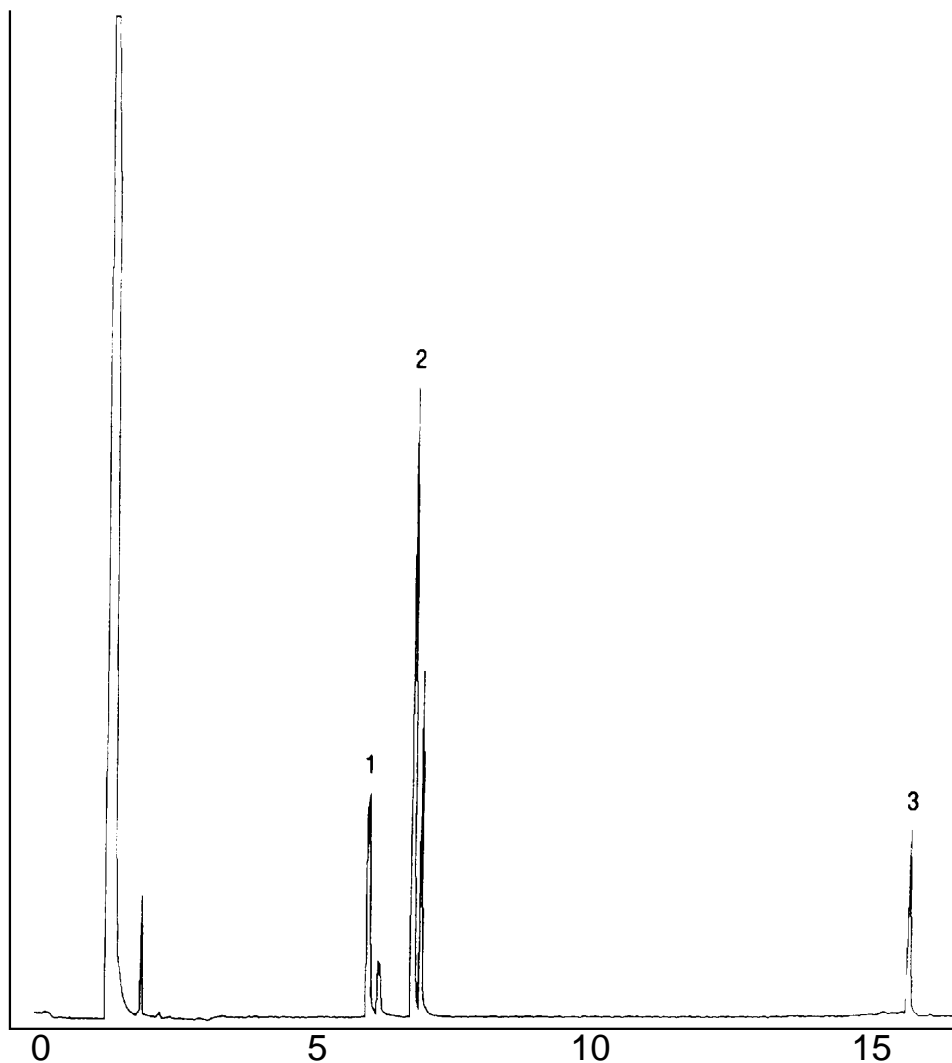
**Detector:** 300°C, FID

**Carrier Gas:** 28 cm/sec., Helium

1. D+L-Amphetamine

2. D+L-Methamphetamine

3. Methylphenidate



# QUADREX



PO Box 3881, Woodbridge, CT 06525 • (203) 393-3112 • FAX (203) 393-0391  
TOLLFREE: 800-275-7033 • E-MAIL: [tech@quadrexcorp.com](mailto:tech@quadrexcorp.com) • WEB: [www.quadrexcorp.com](http://www.quadrexcorp.com)