



# GC CAPILLARY COLUMN APPLICATIONS: **Clinical/ Toxicological**

## *Schedule II Opiates*

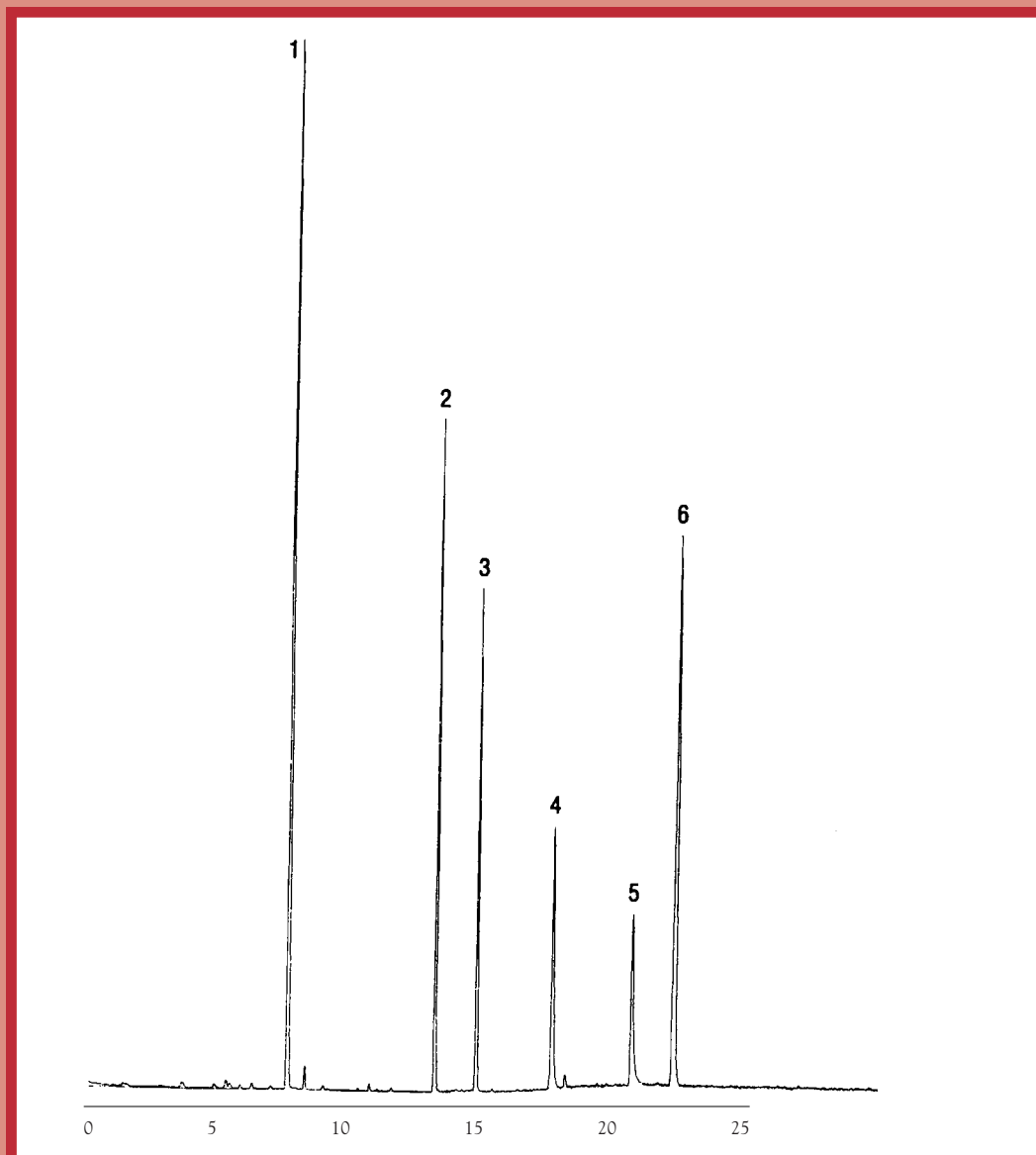
**Column:** 007-1701, (14% Cyanopropylphenyl)  
Methylpolysiloxane  
30M. x 0.25mm I.D. x 0.25µm film  
Cat. No.: 007-1701-30-0.25F

**Temperature:** 150° (10°/min.) -300°C  
**Injector:** 250°C  
**Detector:** MSD  
**Carrier Gas:** 28 cm/sec., Helium

1. Meperidine  
2. Methadone

3. Cocaine  
4. Codeine

5. Oxycodone  
6. Fentanyl



# QUADREX



PO Box 3881, Woodbridge, CT 06525 • (203) 393-3112 • FAX (203) 393-0391  
TOLLFREE: 800-275-7033 • E-MAIL: [tech@quadrexcorp.com](mailto:tech@quadrexcorp.com) • WEB: [www.quadrexcorp.com](http://www.quadrexcorp.com)