



GC CAPILLARY COLUMN APPLICATIONS: **Clinical/ Toxicological**

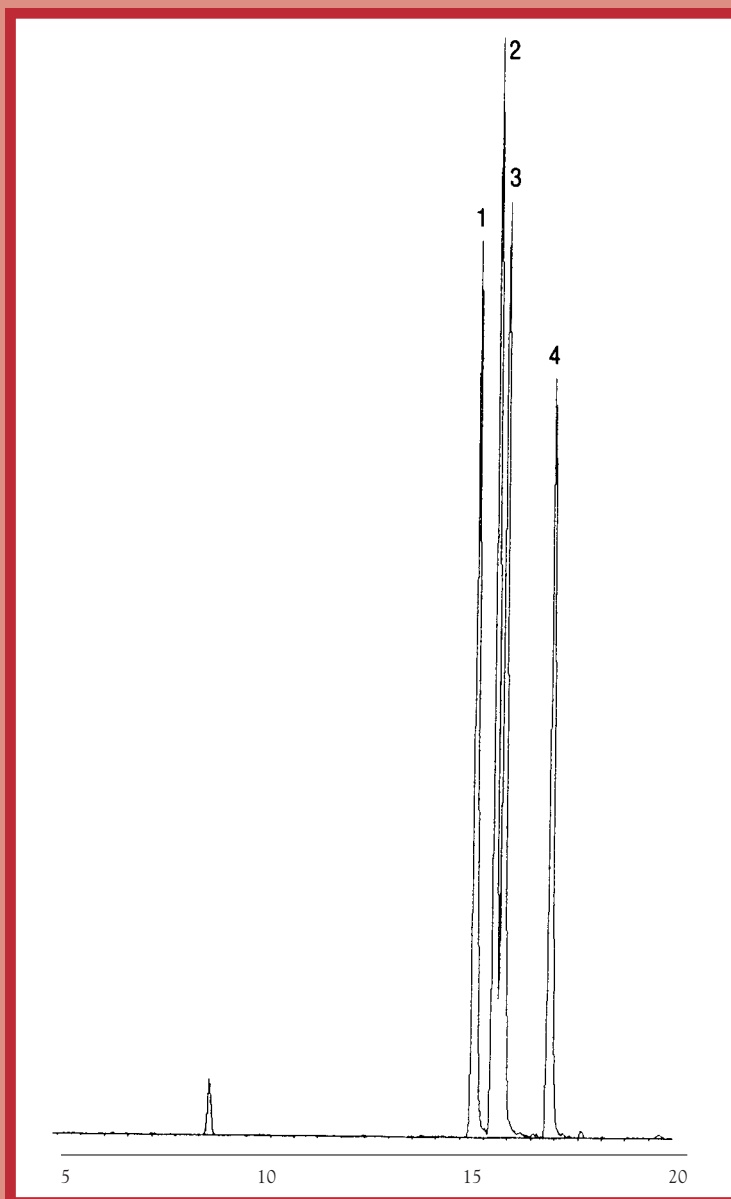
Schedule II Depressants

COLUMN: 007-1701, (14% Cyanopropylphenyl)
Methylpolysiloxane
25M. x 0.25mm I.D. x 0.25 μ m film
Cat. No.: 007-1701-25-0.25F

Temperature: 90° (1.5 min. hold) (10°/min.) -300°C
Injector: 220°C
Detector: MSD
Carrier Gas: 28 cm/sec., Helium

1. Amobarbital
2. Secobarbital

3. Phencyclidine (PCP)
4. Pentobarbital



QUADREX



PO Box 3881, Woodbridge, CT 06525 • (203) 393-3112 • FAX (203) 393-0391
TOLLFREE: 800-275-7033 • E-MAIL: tech@quadrexcorp.com • WEB: www.quadrexcorp.com