



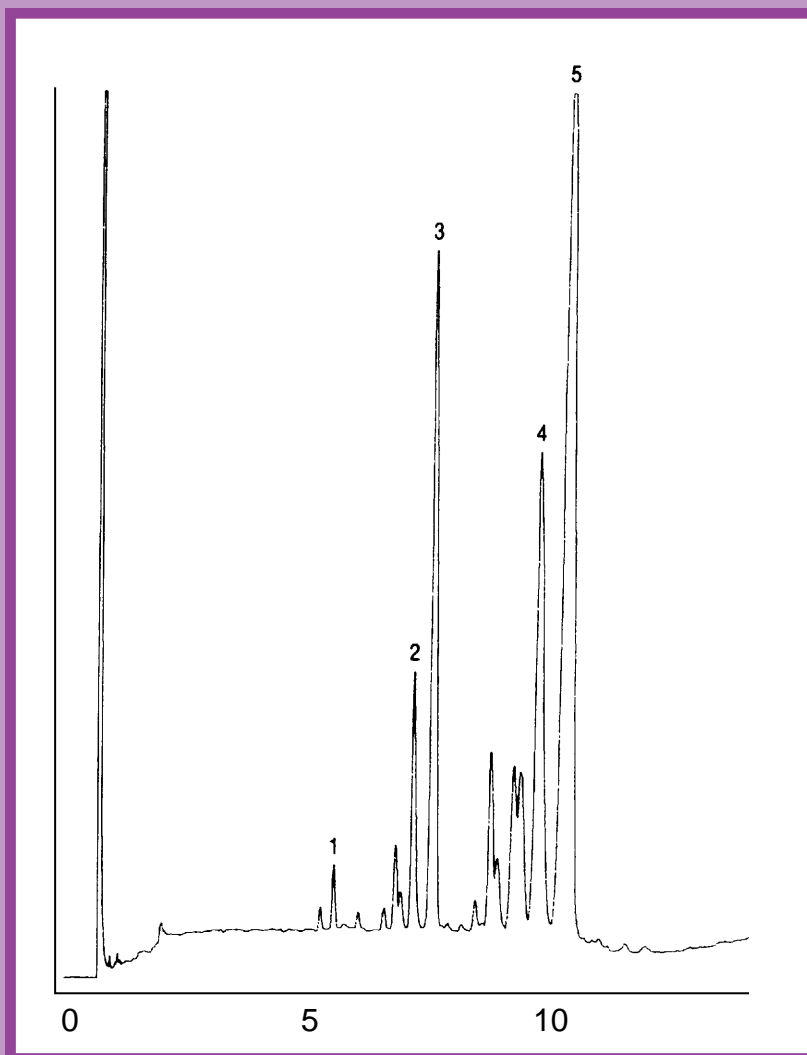
GC CAPILLARY COLUMN APPLICATIONS: Triglycerides

Safflower Oil

COLUMN: 400-65HT, (65% Phenyl)
Methylpolysiloxane - Aluminum-Clad
15M. x 0.25mm I.D. x 0.1µm film
Cat. No.: 400-65HT-15-0.1F

Temperature: 350° (0.5 min. hold) (1°/min.) - 365°C
Injector: 400°C
Detector: 400°C, FID
Carrier Gas: 35 cm/sec., Helium

1. plp 3. pll 5. III
2. plo 4. oll



QUADREX



PO Box 3881, Woodbridge, CT 06525 • (203) 393-3112 • FAX (203) 393-0391
TOLLFREE: 800-275-7033 • E-MAIL: tech@quadrexcorp.com • WEB: www.quadrexcorp.com