



# GC CAPILLARY COLUMN APPLICATIONS: **Clinical/ Toxicological**

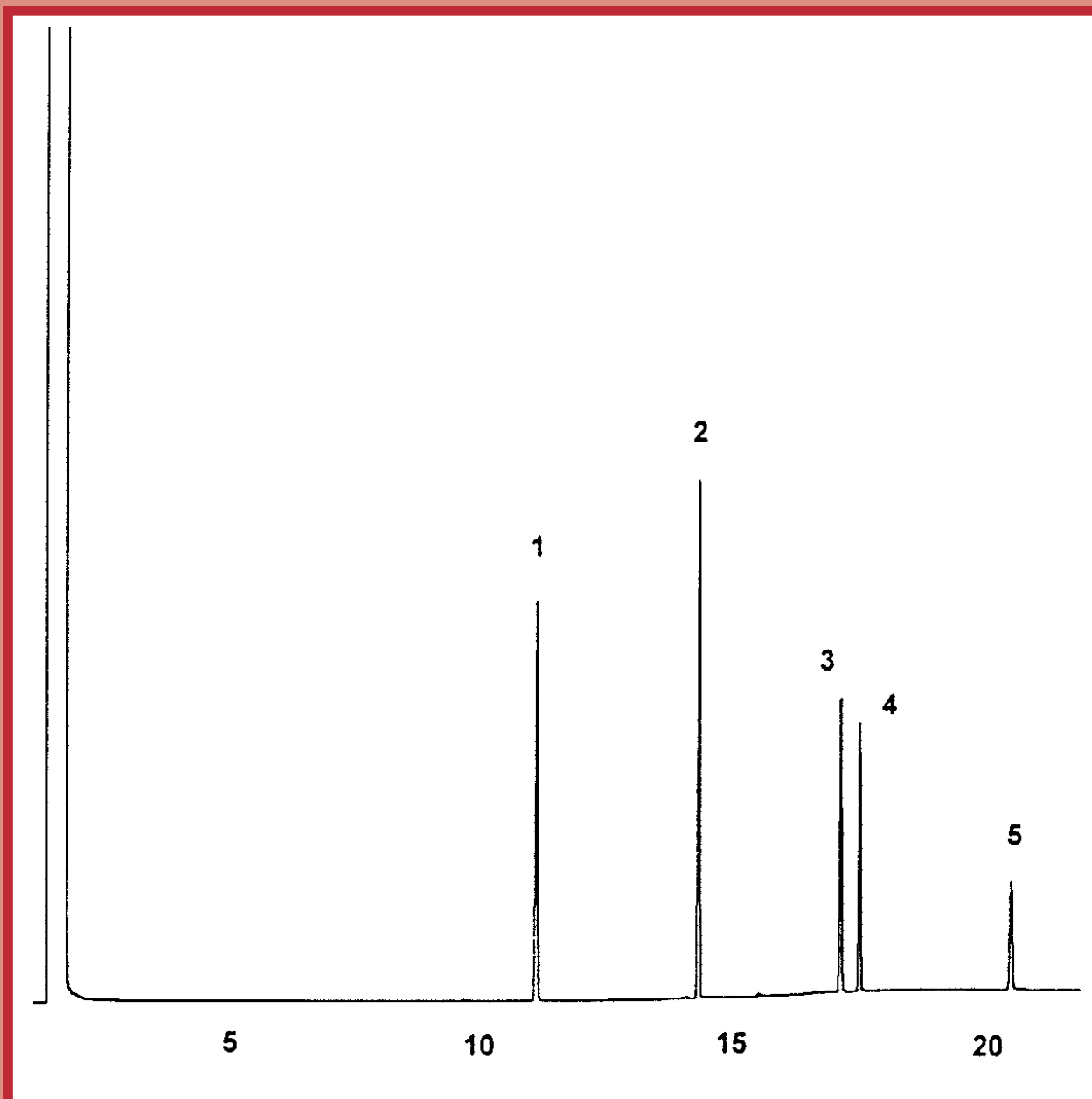
**QUIK CHEK™  
Depressants**

QUIK-CHEK is a trademark of Alltech Associates

**COLUMN:** 007-1301, 6% Cyanopropyl Phenyl Methylpolysiloxane  
30M. x 0.25mm I.D. x 0.5µm film  
Cat. No.: 007-1301-30-0.5F

**Temperature:** 140° (8°/min.) - 300°C  
**Injector:** 225°C  
**Detector:** 310°C, FID  
**Carrier Gas:** 30 cm/sec., Helium

- |                 |                   |             |
|-----------------|-------------------|-------------|
| 1. Glutethimide | 3. Methaqualone   | 5. Diazepan |
| 2. Carbromal    | 4. Chlorpromazine |             |



**QUADREX**



PO Box 3881, Woodbridge, CT 06525 • (203) 393-3112 • FAX (203) 393-0391  
TOLLFREE: 800-275-7033 • E-MAIL: tech@quadrexcorp.com • WEB: www.quadrexcorp.com