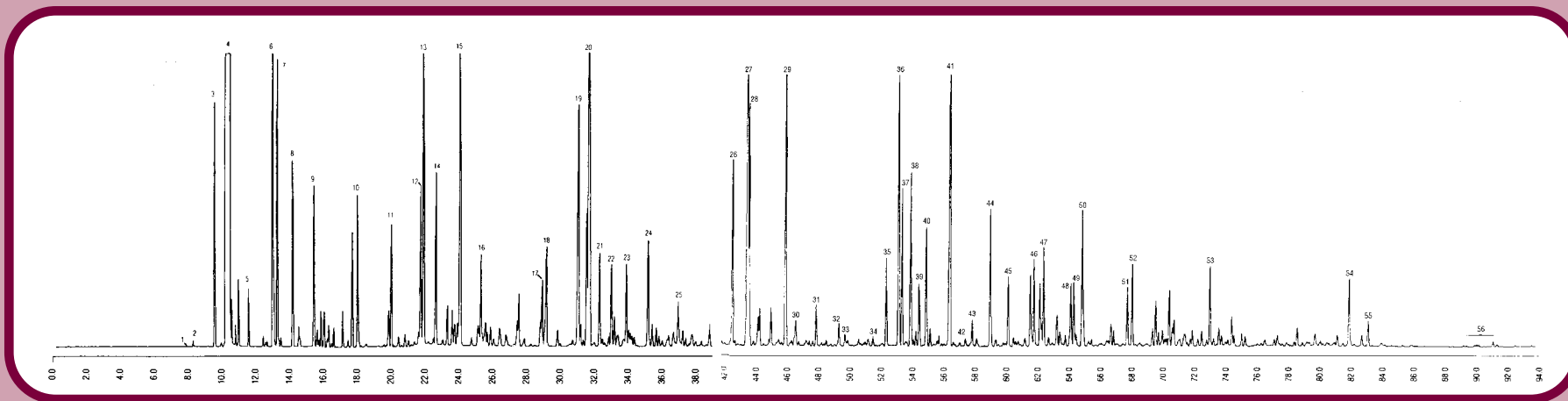




# GC CAPILLARY COLUMN APPLICATIONS: Petrochemical



## Super Unleaded Gasoline

**COLUMN:** 007-1, Dimethylpolysiloxane  
100M. x 0.25mm I.D. x 0.5µm film  
Cat. No.: 007-1-100-0.5F

**Temperature:** 35° (15.0 min. hold) (2°/min.) - 200°C hold

**Injector:** 200°C

**Detector:** 225°C, FID

**Carrier Gas:** 22.8 cm/sec., Helium

- |                            |                             |                                 |
|----------------------------|-----------------------------|---------------------------------|
| 1. isobutane               | 20. toluene                 | 39. 3,3,4-trimethylheptane      |
| 2. butane                  | 21. 2,3-dimethylhexane      | 40. 1-methyl-2-ethylbenzene     |
| 3. isopentane              | 22. 2-methylheptane         | 41. 1,2,4-trimethylbenzene      |
| 4. pentane                 | 23. 3-methylheptane         | 42. isobutylbenzene             |
| 5. 2,2-dimethylbutane      | 24. 2-methyl-1-heptane      | 43. sec-butylbenzene            |
| 6. 2,3-dimethylbutane      | 25. octane                  | 44. 1,2,3-trimethylbenzene      |
| 7. 2-methylpentane         | 26. ethylbenzene            | 45. indane                      |
| 8. 3-methylpentane         | 27. m-xylene                | 46. 1,3-diethylbenzene          |
| 9. hexane                  | 28. p-xylene                | 47. butylbenzene                |
| 10. 2,4-dimethylpentane    | 29. o-xylene                | 48. 1,4-dimethyl-2-ethylbenzene |
| 11. benzene                | 30. 1-nonane                | 49. 1,3-dimethyl-4-ethylbenzene |
| 12. 2,3-dimethylpentane    | 31. nonane                  | 50. 1,2-dimethyl-4-ethylbenzene |
| 13. 2-methylhexane         | 32. isopropylbenzene        | 51. 1,2,4,5-tetramethylbenzene  |
| 14. 3-methylhexane         | 33. 3,3,5-trimethylheptane  | 52. 1,2,3,5-tetramethylbenzene  |
| 15. 2,2,4-trimethylpentane | 34. 2,4,5-trimethylheptane  | 53. naphthalene                 |
| 16. heptane                | 35. propylbenzene           | 54. 2-methylnaphthalene         |
| 17. 2,5-dimethylhexane     | 36. 1-methyl-3-ethylbenzene | 55. 1-methylnaphthalene         |
| 18. 2,4-dimethylhexane     | 37. 1-methyl-4-ethylbenzene | 56. dimethylnaphthalenes        |
| 19. 2,3,4-trimethylpentane | 38. 1,3,5-trimethylbenzene  |                                 |



PO Box 3881, Woodbridge, CT 06525 • (203) 393-3112 • FAX (203) 393-0391  
TOLLFREE: 800-275-7033 • E-MAIL: tech@quadrexcorp.com • WEB: www.quadrexcorp.com