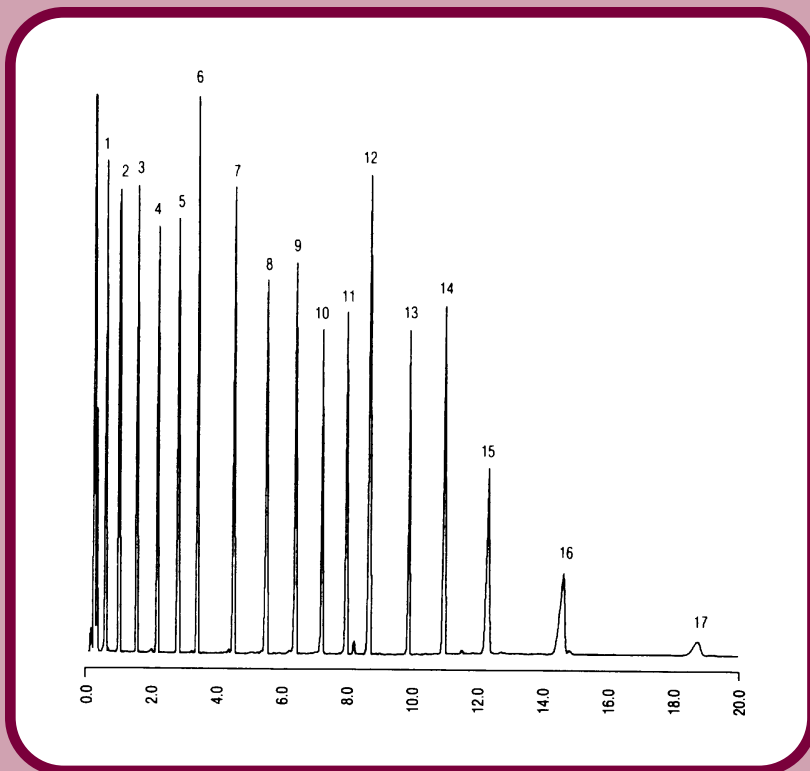




# GC CAPILLARY COLUMN APPLICATIONS:

## Petrochemical



### Sim Dis - ASTM 2887

**COLUMN:** 007-1, Dimethylpolysiloxane  
10M. x 0.53mm I.D. X 1.0 $\mu$ m film  
Cat. No.: 007-1-10V-1.0F

**Temperature:** 35° (25°/min.) - 320°C

**Injector:** 350°C

**Detector:** 350°C, FID

**Carrier Gas:** 20 ml/min., Helium

- |        |         |
|--------|---------|
| 1. C6  | 10. C18 |
| 2. C7  | 12. C24 |
| 3. C8  | 11. C20 |
| 4. C9  | 13. C28 |
| 5. C10 | 14. C32 |
| 6. C11 | 15. C36 |
| 7. C12 | 16. C40 |
| 8. C14 | 17. C44 |
| 9. C16 |         |



PO Box 3881, Woodbridge, CT 06525 • (203) 393-3112 • FAX (203) 393-0391  
TOLLFREE: 800-275-7033 • E-MAIL: [tech@quadrexcorp.com](mailto:tech@quadrexcorp.com) • WEB: [www.quadrexcorp.com](http://www.quadrexcorp.com)