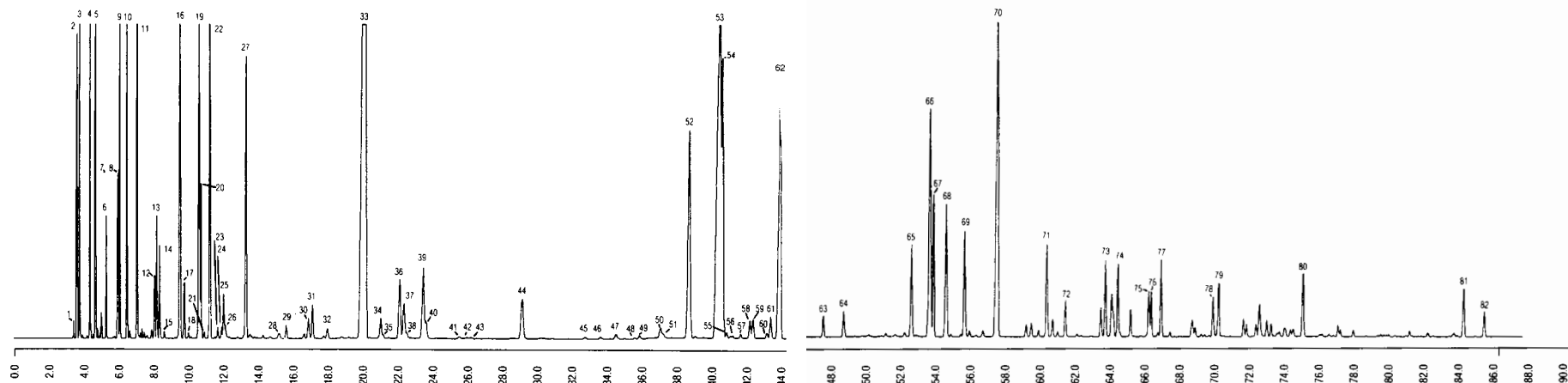




GC CAPILLARY COLUMN APPLICATIONS: Petrochemical



Reference Reformate Standard

COLUMN: 007-1, Bonded Dimethylpolysiloxane
50M. x 0.25mm I.D. x 0.5 μ m film
Cat. No.: 007-1-50-0.5F

Temperature: 35 $^{\circ}$ (30.0 min. hold) (2 $^{\circ}$ /min.) - 200 $^{\circ}$ C hold
Injector: 200 $^{\circ}$ C

Detector: 250 $^{\circ}$ C, FID
Carrier Gas: 25.6 cm/sec., Helium

1. propane
2. isobutane
3. n-butane
4. isopentane
5. n-pentane
6. 2,2-dimethylbutane
7. cyclopentane
8. 2,3-dimethylbutane
9. 2-methylpentane
10. 3-methylpentane
11. n-hexane
12. 2,2-dimethylpentane
13. methylcyclopentane
14. 2,4-dimethylpentane
15. 2,2,3-trimethylbutane
16. benzene

17. 3,3-dimethylpentane
18. cyclohexane
19. 2-methylhexane
20. 2,3-dimethylpentane
21. 1,1-dimethylcyclopentane
22. 3-methylhexane
23. cis-1,3-dimethylcyclopentane
24. trans-1,3-dimethylcyclopentane
25. 3-ethylpentane
26. trans-1,2-dimethylcyclopentane
27. n-heptane
28. 2,2-dimethylhexane
29. ethylcyclopentane
30. 2,5-dimethylhexane and 2,2,3-trimethylpentane
31. 2,4-dimethylhexane

32. 3,3-dimethylhexane
33. toluene
34. 2,3-dimethylhexane
35. 2-methyl-3-ethylpentane
36. 2-methylheptane
37. 4-methylheptane and 3-methyl-3-ethylpentane
38. 3,4-dimethylhexane
39. 3-methylheptane
40. 3-ethylhexane
41. trans-1,3-ethylmethylcyclopentane and 2,2,5-trimethylhexane
42. cis-1,3-ethylmethylcyclopentane
43. trans-1,2-ethylmethylcyclopentane
44. n-octane
45. cis-1,2-ethylmethylcyclopentane and 2,3,5-trimethylhexane
46. 2,2-dimethylheptane
47. 2,4-dimethylheptane
48. 2-methyl-4-ethylhexane
49. 2,6-dimethylheptane
50. 2,5-dimethylheptane
51. 3,3-dimethylheptane and 3,5-dimethylheptane
52. ethylbenzene
53. m-xylene
54. p-xylene
55. 2,3-dimethylheptane
56. 3,4-dimethylheptane
57. 4-ethylheptane

58. 4-methyloctane
59. 2-methyloctane
60. 3-ethylheptane
61. 3-methyloctane
62. o-xylene
63. n-nonane
64. isopropylbenzene
65. propylbenzene
66. 1-methyl-3-ethylbenzene
67. 1-methyl-4-ethylbenzene
68. 1,3,5-trimethylbenzene
69. 1-methyl-2-ethylbenzene
70. 1,2,4-trimethylbenzene
71. 1,2,3-trimethylbenzene
72. indane
73. 1,3-diethylbenzene

74. butylbenzene
75. 1,4-dimethyl-2-ethylbenzene
76. 1,3-dimethyl-4-ethylbenzene
77. 1,2-dimethyl-4-ethylbenzene
78. 1,2,4,5-tetramethylbenzene
79. 1,2,3,5-tetramethylbenzene
80. naphthalene
81. 2-methylnaphthalene
82. 1-methylnaphthalene



PO Box 3881, Woodbridge, CT 06525 • (203) 393-3112 • FAX (203) 393-0391
TOLLFREE: 800-275-7033 • E-MAIL: tech@quadrexcorp.com • WEB: www.quadrexcorp.com