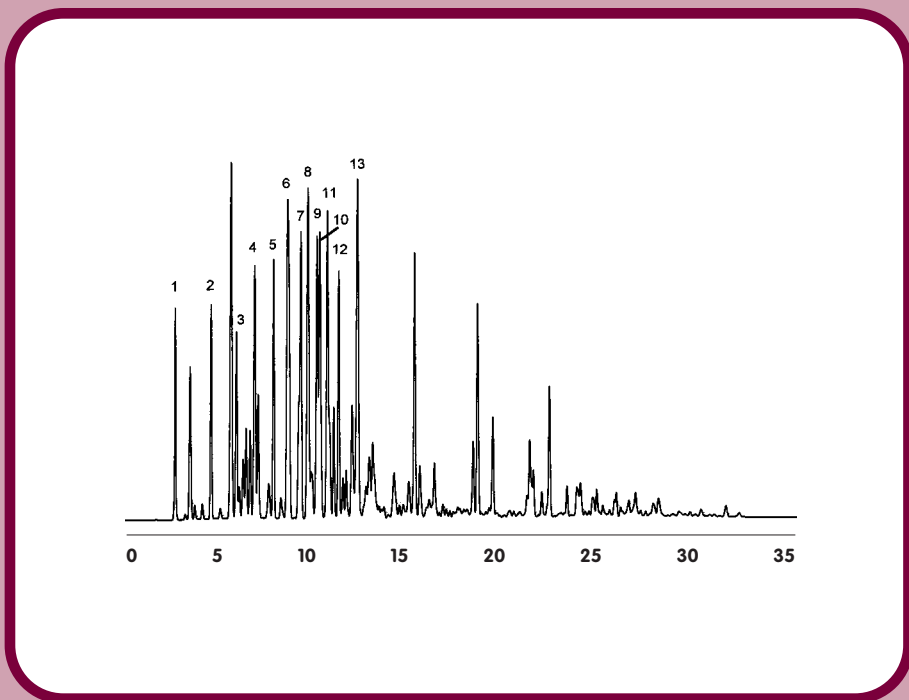




GC CAPILLARY COLUMN APPLICATIONS:

Petrochemical



Oxygenates in RF Gasoline

COLUMN: 007-1, Dimethylpolysiloxane
20M. x 0.18mm I.D. x 6.0 μ m film
PHAT Phase™
Cat. No.: 007-1-20HS-6.0F

Temperature: 40° (3.5 min. hold)
(10°/min.) - 85°C - (7°/min.) - 235°C

Injector: 220°C

Detector: 300°C, FID

Carrier Gas: 28 cm/sec, Helium

1. methanol
2. ethanol
3. isopropanol
4. t-butanol
5. n-propanol
6. MTBE
7. sec-butanol
8. diisopropyl ether (DIPE)
9. isobutanol
10. ETBE
11. t-amyl alcohol
12. butanol
13. t-amylmethyl ether (TAME)



PO Box 3881, Woodbridge, CT 06525 • (203) 393-3112 • FAX (203) 393-0391
TOLLFREE: 800-275-7033 • E-MAIL: tech@quadrexcorp.com • WEB: www.quadrexcorp.com