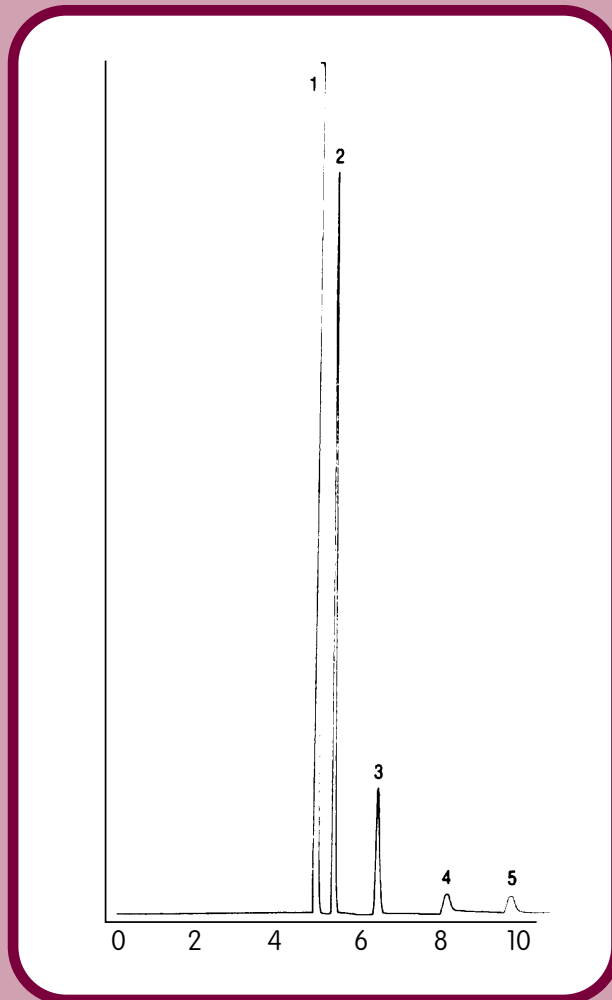




GC CAPILLARY COLUMN APPLICATIONS:

Petrochemical



Natural Gas

COLUMN: 007-5, (5% Phenyl) Methylpolysiloxane
50M. x 0.53mm I.D. x 5.0µm film
Cat. No.: 007-5-50V-5.0F

Temperature: 35°C

Injector: 35°C

Detector: 100°C, FID

Carrier Gas: 5 ml/min., Helium

1. methane
2. ethane
3. propane
4. isobutane
5. butane



PO Box 3881, Woodbridge, CT 06525 • (203) 393-3112 • FAX (203) 393-0391
TOLLFREE: 800-275-7033 • E-MAIL: tech@quadrexcorp.com • WEB: www.quadrexcorp.com