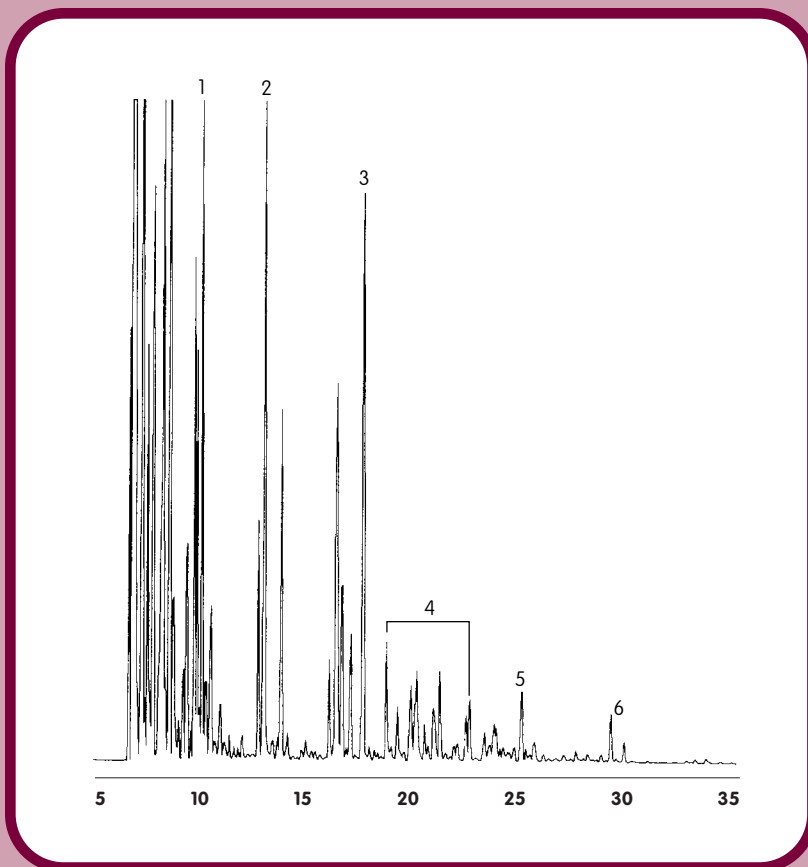




GC CAPILLARY COLUMN APPLICATIONS:

Petrochemical



Gasoline - Quick Screen

Column: 007-5, (5% Phenyl) Methylpolysiloxane
30M. x 0.53mm I.D. x 1.0 μ m film
Cat. No.: 007-5-30V-1.0F

Temperature: 50° (2 min. hold)
(8°/min.) - 180°C

Injector: 225°C

Detector: 300°C, FID

Carrier Gas: 6 ml/min., Helium

1. toluene
2. ethyl benzene and xylene isomers
3. trimethylbenzenes
4. tetramethylbenzenes
5. naphthalene
6. 1- & 2- methylnaphthalene



PO Box 3881, Woodbridge, CT 06525 • (203) 393-3112 • FAX (203) 393-0391
TOLLFREE: 800-275-7033 • E-MAIL: tech@quadrexcorp.com • WEB: www.quadrexcorp.com