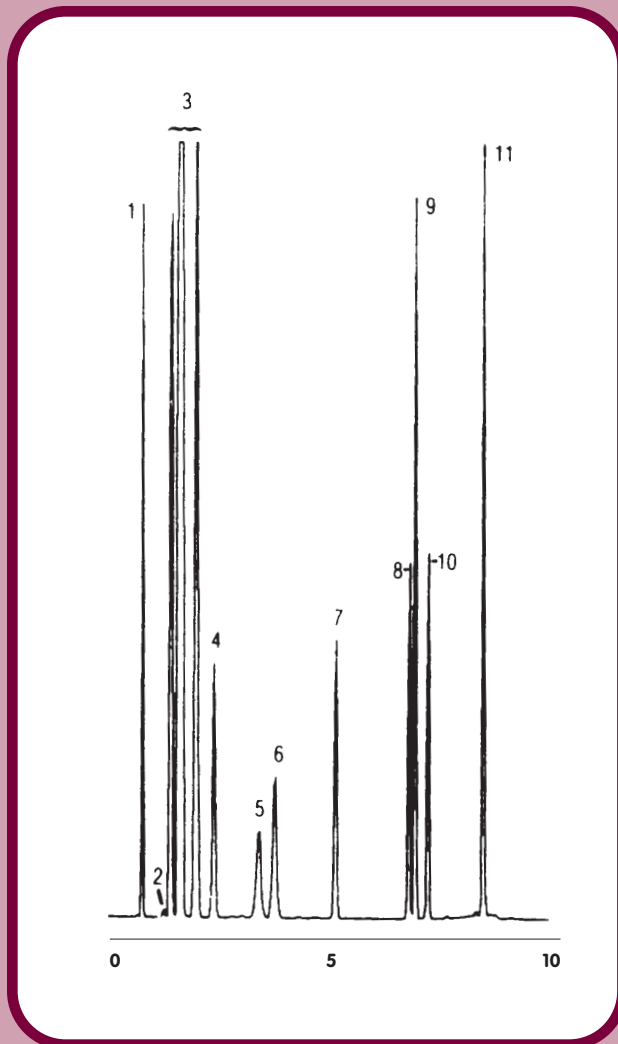




GC CAPILLARY COLUMN APPLICATIONS:

Petrochemical



Determination of Gasoline Range Organics (GRO)

COLUMN: 007-1, Dimethylpolysiloxane
10M. x 0.53mm I.D. x 1.0 μ m film
Cat. No.: 007-1-10V-3.0F

Temperature: 35° (4 min. hold) (20°/min.) - 320°C

Injector: 225°C

Detector: 320°C, FID

Carrier Gas: 10 ml/min., Helium

1. pentane
2. 2-methylpentane
3. hexanes
4. benzene
5. isooctane and 2,2,4-trimethylpentane
6. heptane
7. toluene
8. ethylbenzene
9. p-xylene and m-xylene
10. o-xylene
11. 1,2,4-trimethylbenzene



PO Box 3881, Woodbridge, CT 06525 • (203) 393-3112 • FAX (203) 393-0391
TOLLFREE: 800-275-7033 • E-MAIL: tech@quadrexcorp.com • WEB: www.quadrexcorp.com