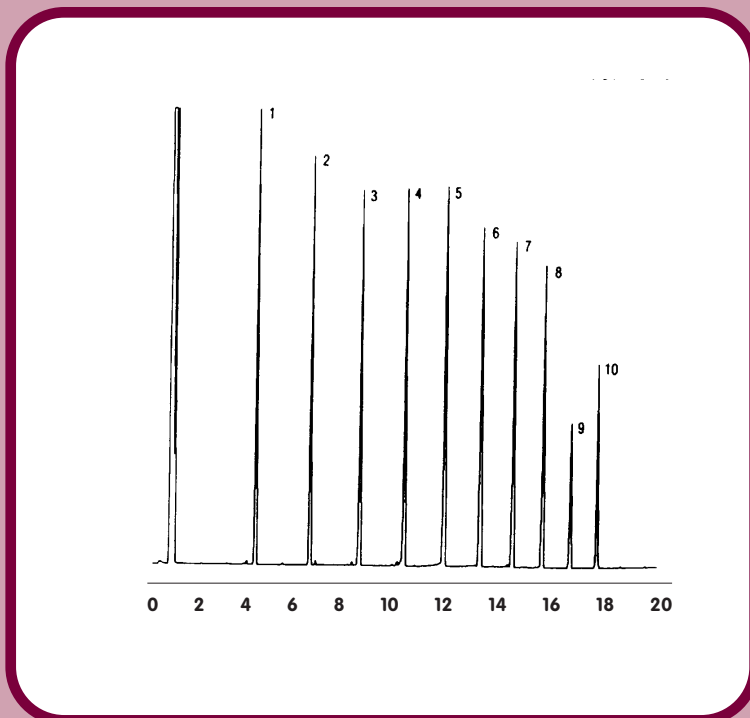




# GC CAPILLARY COLUMN APPLICATIONS:

## Petrochemical



### Determination of Diesel Range Organics (DRO)

**COLUMN:** 007-1, Dimethylpolysiloxane  
10M. x 0.53mm I.D. x 1.0 $\mu$ m film  
Cat. No.: 007-1-10V-1.0F

**Temperature:** 35° (15°/min.) - 320°C  
**Injector:** 250°C  
**Detector:** 320°C, FID  
**Carrier Gas:** 10 ml/min., Helium

1. C10	6. C20
2. C12	7. C22
3. C14	8. C24
4. C16	9. C26
5. C18	10. C28



PO Box 3881, Woodbridge, CT 06525 • (203) 393-3112 • FAX (203) 393-0391  
TOLLFREE: 800-275-7033 • E-MAIL: tech@quadrexcorp.com • WEB: www.quadrexcorp.com