



GC CAPILLARY COLUMN APPLICATIONS:

Petrochemical

Chimney Creosote

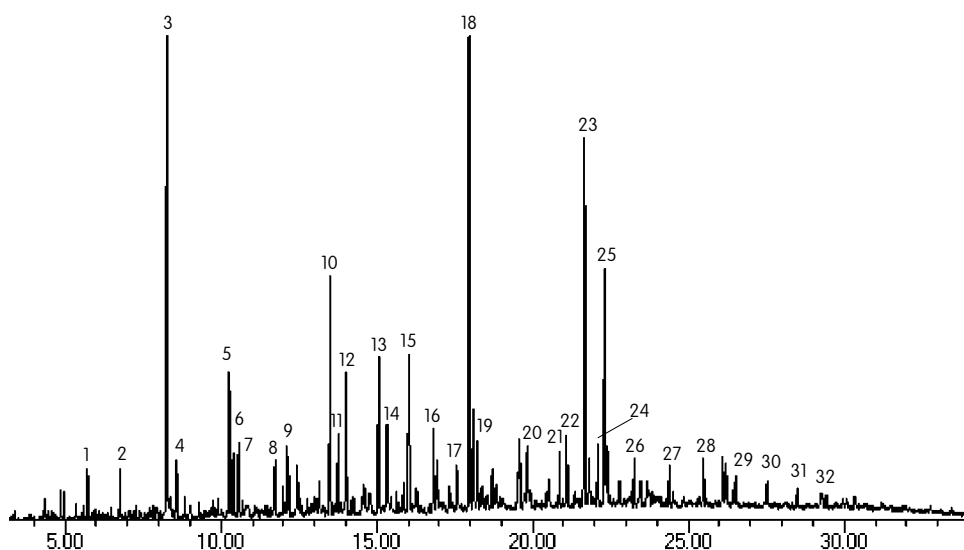
COLUMN: 007-5MS, Silphenylene Polysiloxane
30M. x 0.25mm x 0.25µm film
Cat. No.: 007-5MS-30-0.25F

Temperature: 100° (8°/min.) - 250°C

Injector: 250°C

Detector: MSD, Interface Temperature: 300°C

Carrier Gas: 28cm/sec., He



- | | |
|-------------------------|--|
| 1. indene | 17. dibenzothiophene |
| 2. C11 | 18. phenanthrene |
| 3. naphthalene | 19. C-18 |
| 4. C12 | 20. 4H cyclopenta (d,e,f) phenanthrene |
| 5. 2-methyl naphthalene | 21. C19 |
| 6. C13 | 22. fluoranthene |
| 7. 1-methyl naphthalene | 23. pyrene |
| 8. vinyl naphthalene | 24. C20 |
| 9. C14 | 25. phenyl naphthalene |
| 10. acenaphthalene | 26. C21 |
| 11. C15 | 27. C22 |
| 12. dibenzofuran | 28. C23 |
| 13. 9H-fluorene | 29. C24 |
| 14. C-16 | 30. C25 |
| 15. anthracene | 31. C26 |
| 16. C17 | 32. C27 |



PO Box 3881, Woodbridge, CT 06525 • (203) 393-3112 • FAX (203) 393-0391
TOLLFREE: 800-275-7033 • E-MAIL: tech@quadrexcorp.com • WEB: www.quadrexcorp.com