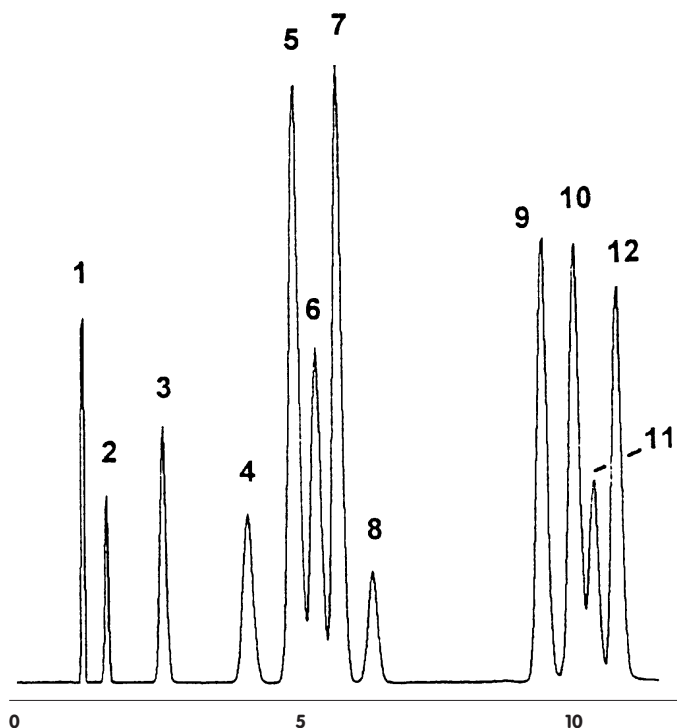




# GC CAPILLARY COLUMN APPLICATIONS:

## Petrochemical

### C1 to C5 Hydrocarbons



**COLUMN:** 007-1, Bonded Dimethylpolysiloxane  
PHAT Phase™  
30M. x 0.32mm I.D. x 10.0µm film  
Cat. No.: 007-1-30W-10.0F

**Temperature:** 35° (3 min hold) (2°/min.) - 45° - (6°/min.) - 100°C

**Injector:** 150°C

**Detector:** 250°C, FID

1. methane
2. ethane
3. propane
4. isobutane
5. isobutylene & 1-butene
6. butane
7. trans-2-butene
8. cis-2-butene
9. 1-pentene
10. pentane
11. trans-2-pentene
12. cis-2-pentene



PO Box 3881, Woodbridge, CT 06525 • (203) 393-3112 • FAX (203) 393-0391  
TOLLFREE: 800-275-7033 • E-MAIL: tech@quadrexcorp.com • WEB: www.quadrexcorp.com