



# GC CAPILLARY COLUMN APPLICATIONS:

## Petrochemical

### C1 to C10 Hydrocarbons

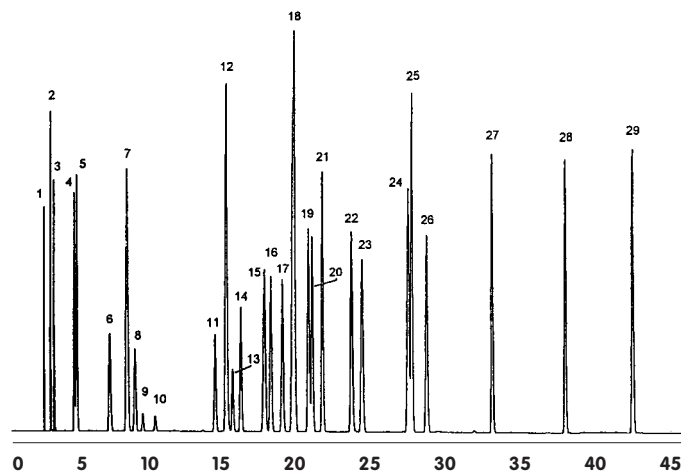
**COLUMN:** 007-1, Dimethylpolysiloxane PHAT Phase™  
20M. x 0.18mm I.D. x 6.0µm film  
Cat. No.: 007-1-20HS-6.0F

**Temperature:** 35° (3 min. hold)  
(2°/min.) - 48° - (6°/min.) - 210°C, hold.

**Injector:** 200°C

**Detector:** 280°C, FID

**Carrier:** 19.0cm/sec., Helium



- |                             |   |
|-----------------------------|---|
| 1. methane                  | 17. 4-methyl-1-pentene                      |
| 2. ethylene                 | 18. 2,3-dimethylbutane<br>& 2-methylpentane |
| 3. ethane                   | 19. 3-methylpentane                         |
| 4. propylene                | 20. 1-hexene                                |
| 5. propane                  | 21. hexane                                  |
| 6. isobutane                | 22. 2,4-dimethylpentane                     |
| 7. isobutylene & 1-butene   | 23. 2,2,3-trimethylbutane                   |
| 8. butane                   | 24. isooctane<br>(2,2,4-trimethylpentane)   |
| 9. trans-2-butene           | 25. heptane                                 |
| 10. cis-2-butene            | 26. 2,2,4-trimethyl-1-pentene               |
| 11. 1-pentene               | 27. octane                                  |
| 12. pentane                 | 28. nonane                                  |
| 13. trans-2-pentene         | 29. decane                                  |
| 14. cis-2-pentene           |   |
| 15. 2,2-dimethylbutane      |   |
| 16. 3-methyl-1,4-pentadiene |   |



PO Box 3881, Woodbridge, CT 06525 • (203) 393-3112 • FAX (203) 393-0391  
TOLLFREE: 800-275-7033 • E-MAIL: tech@quadrexcorp.com • WEB: www.quadrexcorp.com