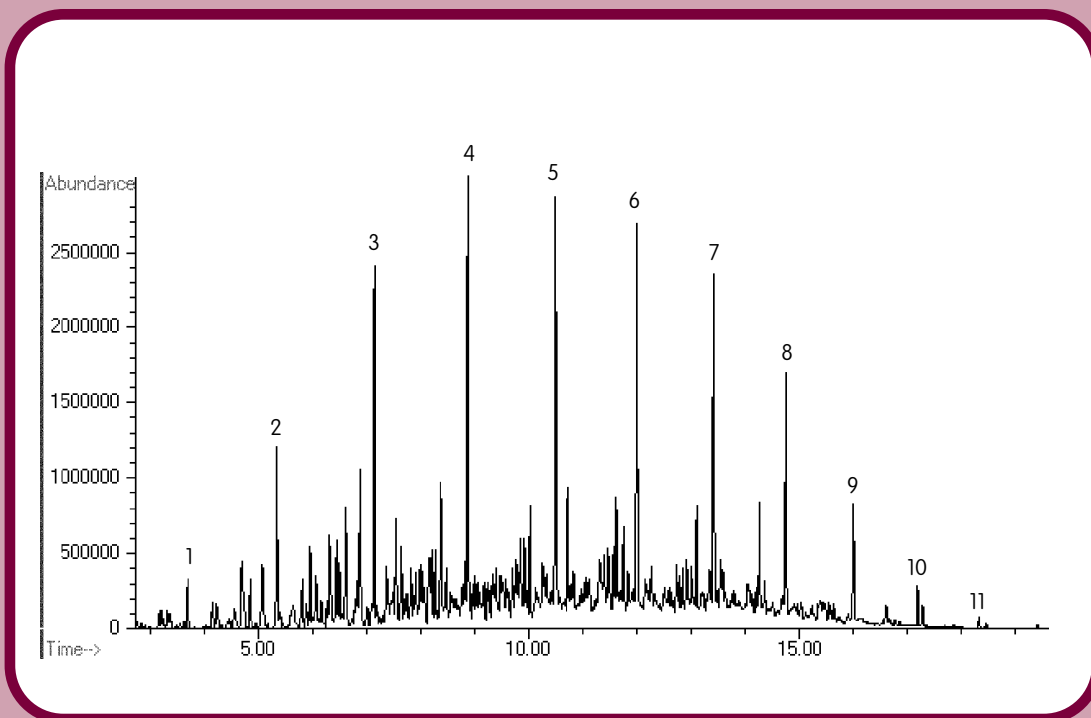




GC CAPILLARY COLUMN APPLICATIONS:

Petrochemical



Aviation Fuel - Jet A

COLUMN: 007-5MS, Silphenylene Siloxane
30M. x 0.25mm I.D. x 0.25 μ m film
Cat. No.: 007-5MS-30-0.25F

Temperature: 40° (2.0 min. hold) (10°/min.) - 300°C

Injector: 225°C

Detector: MSD, Transfer line temperature: 300°C

Carrier Gas: 30cm/sec., Helium

1. C8
2. C9
3. C10
4. C11
5. C12
6. C13
7. C14
8. C15
9. C16
10. C17
11. C18



PO Box 3881, Woodbridge, CT 06525 • (203) 393-3112 • FAX (203) 393-0391
TOLLFREE: 800-275-7033 • E-MAIL: tech@quadrexcorp.com • WEB: www.quadrexcorp.com