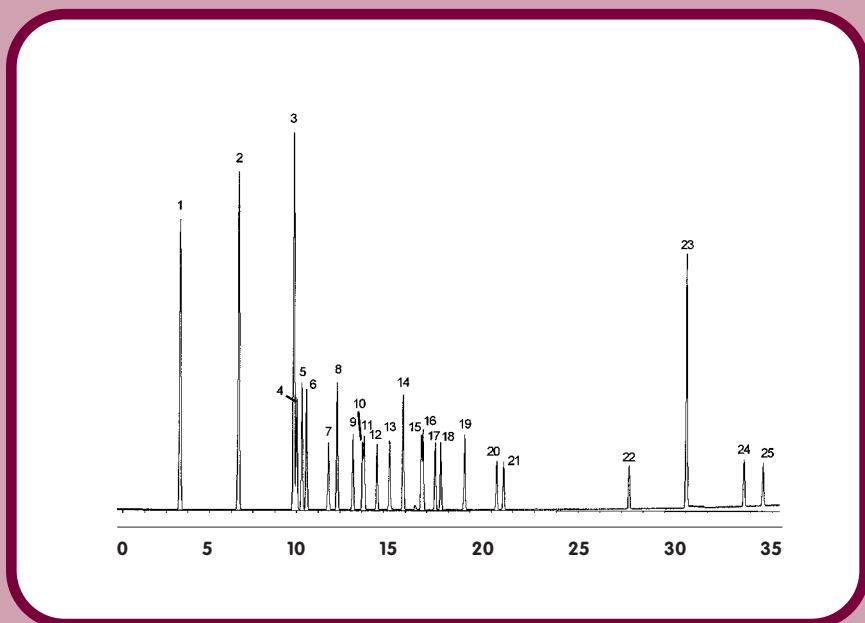




GC CAPILLARY COLUMN APPLICATIONS:

Petrochemical

Aromatics in RF Gasoline



COLUMN: 007-CW, Bonded Carbowax
30M. x 0.25mm I.D. x 1.0 μ m film
Cat. No.: 007-CW-30-1.0F

Temperature: 40° (2.0 min. hold)(5°/min.) - 240°C

Injector: 220°C

Detector: MSD

Carrier Gas: 28 cm/sec, Helium

- | | |
|------------------------------|----------------------------------|
| 1. benzene & benzene d6 | 14. 1,2,4-trimethylbenzene |
| 2. toluene | 15. 1,4-diethylbenzene |
| 3. ethylbenzene d10 | 16. butylbenzene |
| 4. ethylbenzene | 17. 1,2-diethylbenzene |
| 5. o-xylene | 18. 1,2,3-trimethylbenzene |
| 6. p-xylene | 19. indan |
| 7. isopropylbenzene (cumene) | 20. 1,2,4,5-tetramethylbenzene |
| 8. m-xylene | 21. 1,2,3,5-tetramethylbenzene |
| 9. propylbenzene | 22. pentamethylbenzene |
| 10. 1-methyl-3-ethylbenzene | 23. naphthalene & naphthalene d8 |
| 11. 1-methyl-2-ethylbenzene | 24. 2-methylnaphthalene |
| 12. 1,3,5-trimethylbenzene | 25. 1-methylnaphthalene |
| 13. 1-methyl-4-ethylbenzene | |



PO Box 3881, Woodbridge, CT 06525 • (203) 393-3112 • FAX (203) 393-0391
TOLLFREE: 800-275-7033 • E-MAIL: tech@quadrexcorp.com • WEB: www.quadrexcorp.com