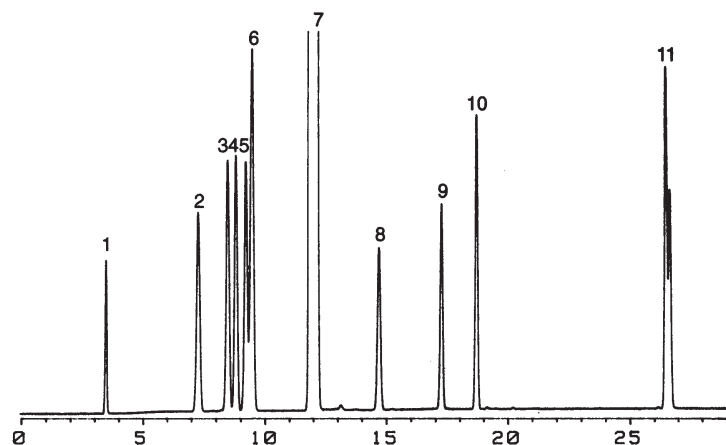




# GC CAPILLARY COLUMN APPLICATIONS:

## Petrochemical

### ASTM D5441 - Impurities in MTBE



**COLUMN:** 007-1, Dimethylpolysiloxane PHAT Phase™  
20M. x 0.18mm I.D. x 6.0µm film  
Cat. No.: 007-1-20HS-6.0F

**Temperature:** 40°(3 min. hold)  
(5°/min.) - 100° - (12°/min) - 210°C

**Flow:** 12 psi, Helium

**Injector:** 225°C

**Detector:** 300°C, FID

1. methanol
2. 2-methylbutane
3. pentane
4. cis-2-pentene
5. trans-2-pentene
6. 2 methyl-2-butene
7. MTBE
8. t-butyl ethyl ether
9. t-amyl methyl ether
10. 2,2,4-trimethyl-1-pentene
11. cis/trans-2,2',4,6,6'-pentamethyl-3-heptene



PO Box 3881, Woodbridge, CT 06525 • (203) 393-3112 • FAX (203) 393-0391  
TOLLFREE: 800-275-7033 • E-MAIL: tech@quadrexcorp.com • WEB: www.quadrexcorp.com