



GC CAPILLARY COLUMN APPLICATIONS: **Clinical/ Toxicological**

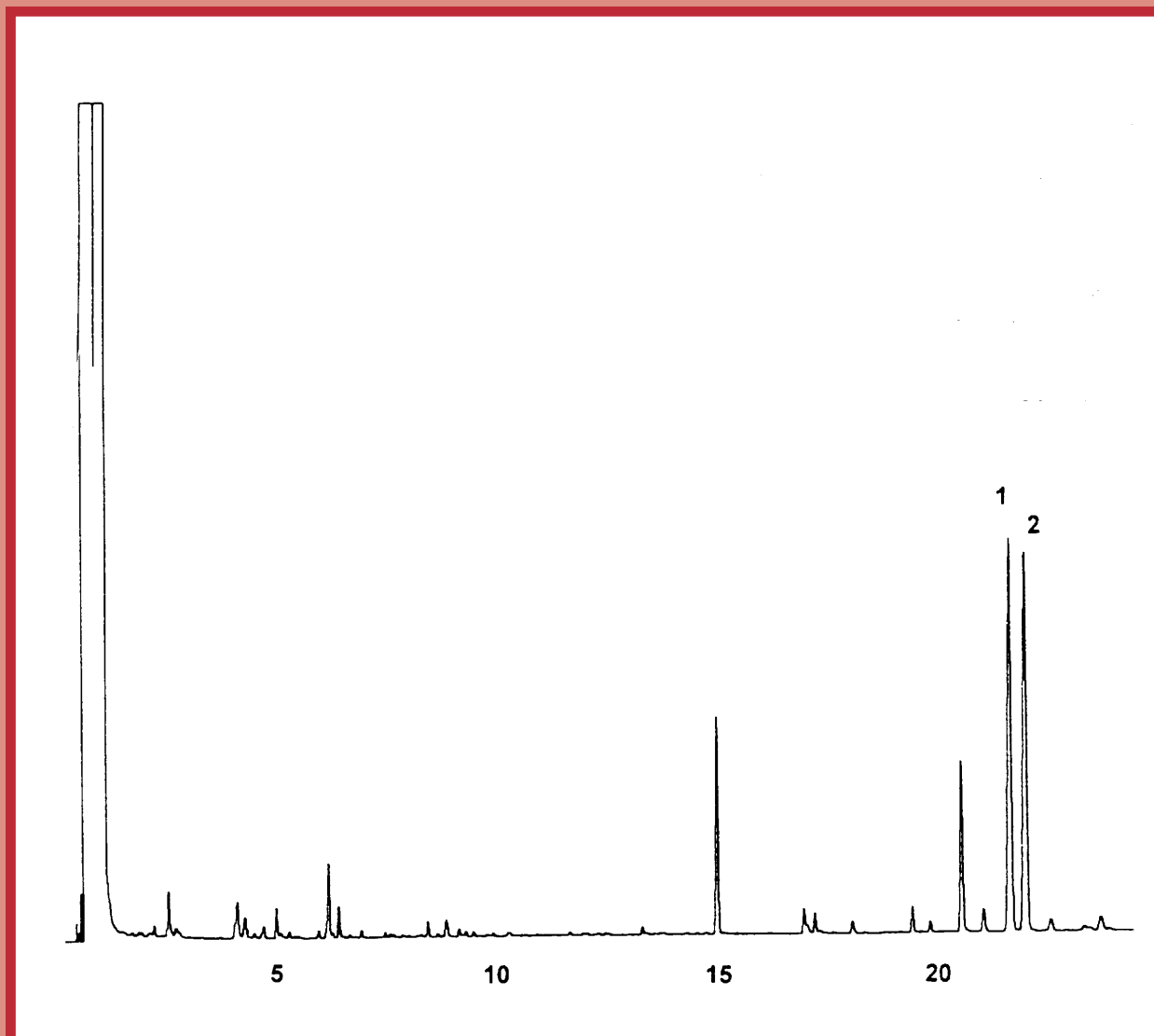
*"Pepper"
Spray*

COLUMN: 007-5,* (5% Phenyl) Methylpolysiloxane
30M. x 0.53mm I.D. x 1.0 μ m film
Cat. No.: 007-5-30V-1.0F

Temperature: 100° (8°/min.) -260°C
Injector: 240°C
Detector: 310°C, FID
Carrier Gas: 10 ml/min., Helium

1. Capsaicin

2. Dihydrocapsaicin



QUADREX



PO Box 3881, Woodbridge, CT 06525 • (203) 393-3112 • FAX (203) 393-0391
TOLLFREE: 800-275-7033 • E-MAIL: tech@quadrexcorp.com • WEB: www.quadrexcorp.com