



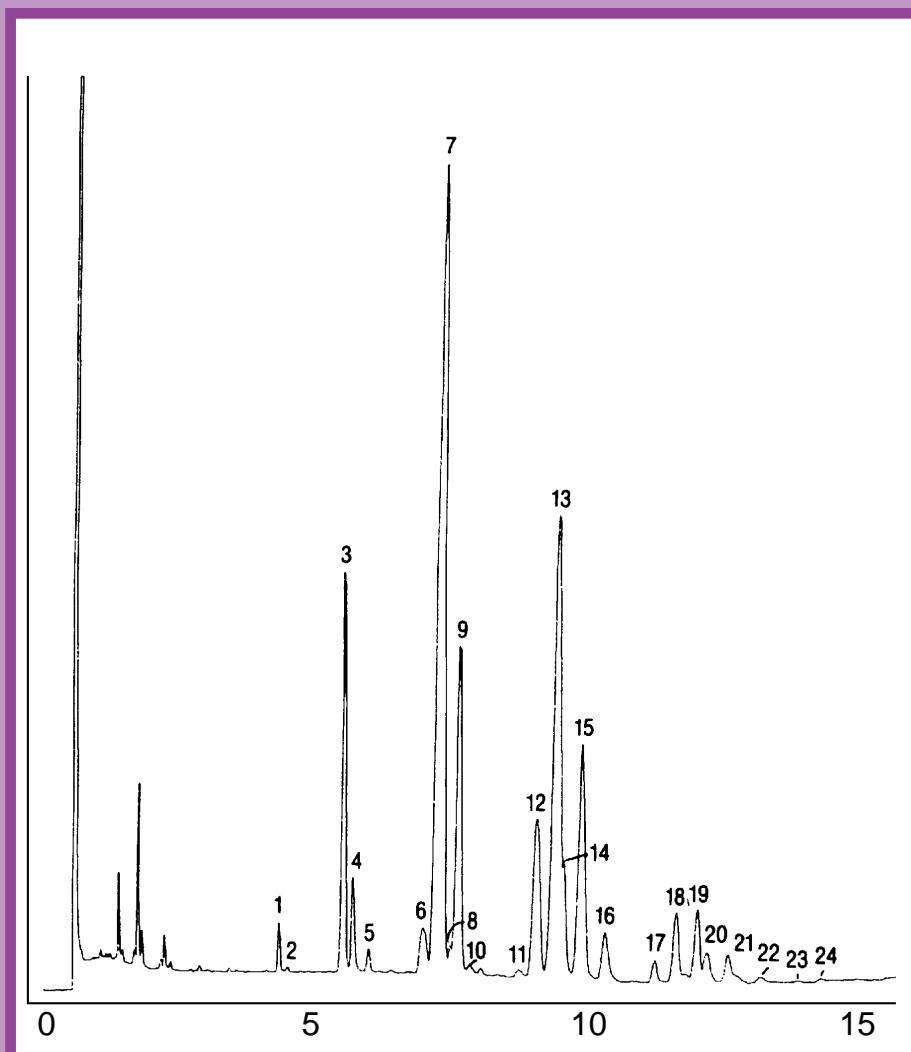
GC CAPILLARY COLUMN APPLICATIONS: Triglycerides

Palm Oil

COLUMN: 400-65HT, (65% Phenyl)
Methylpolysiloxane - Aluminum-Clad
15M. x 0.25mm I.D. x 0.1µm film
Cat. No.: 400-65HT-15-0.1F

Temperature: 340° (1°/min.) - 365°C
Injector: 400°C
Detector: 400°C, FID
Carrier Gas: 35 cm/sec., Helium

1. mpp	7. pop	13. poo	19. ooo
2. mom	8. moo	14. pls	20. slo
3. ppp	9. plp	15. plo	21. olo
4. mop	10. mlo	16. pll	22. oll
5. mlp	11. pss	17. sos	23. soa
6. pps	12. pcs	18. soo	24. aoo



QUADREX



PO Box 3881, Woodbridge, CT 06525 • (203) 393-3112 • FAX (203) 393-0391
TOLLFREE: 800-275-7033 • E-MAIL: tech@quadrexcorp.com • WEB: www.quadrexcorp.com