



# GC CAPILLARY COLUMN APPLICATIONS: Fames

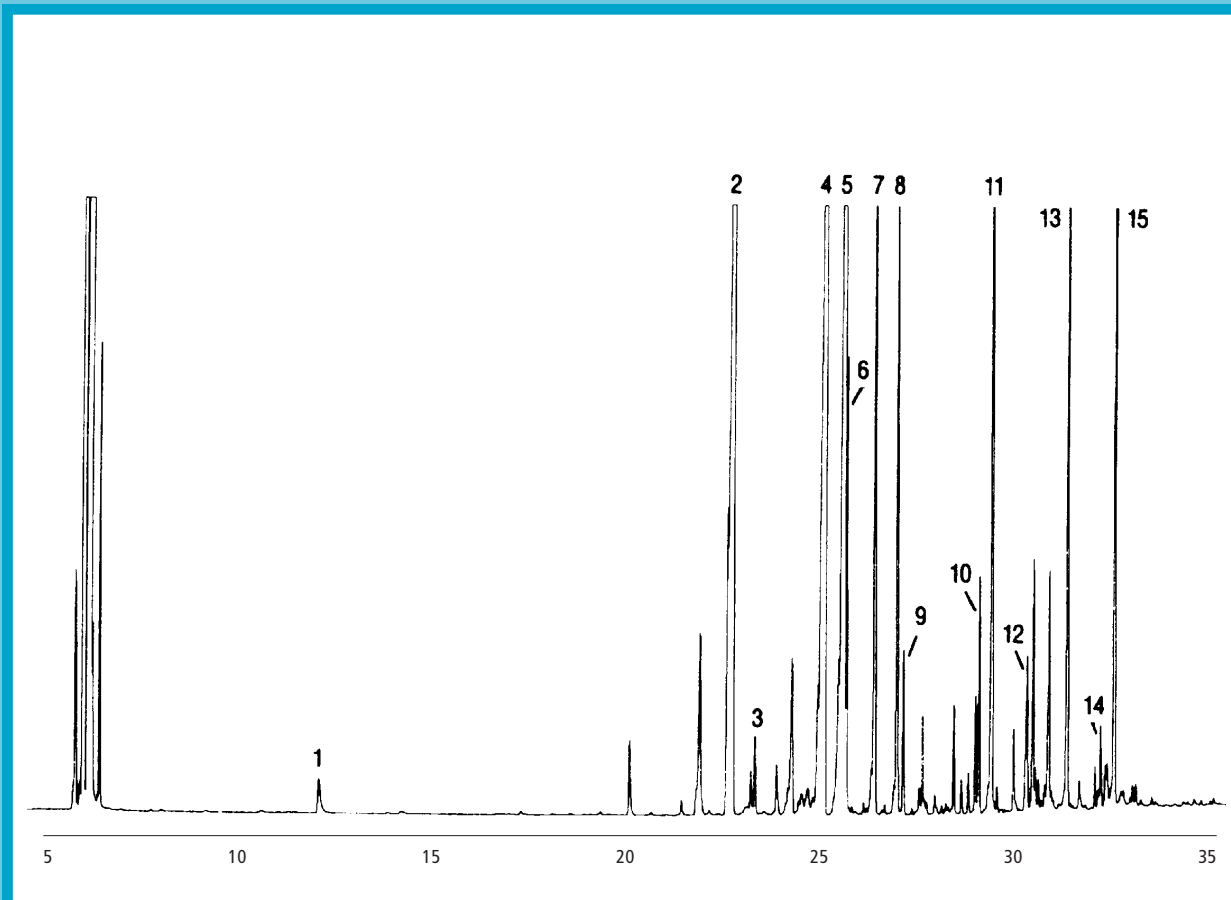
## PUFA 2

## Animal Source

**COLUMN:** 007-23, Bonded Cyanopropyl Polysiloxane  
50M. x 0.25mm I.D. x 0.25µm film  
Cat. No.: 007-23-50-0.25F

**Temperature:** 60° (5°/min.) - 260°C  
**Injector:** 230°C  
**Detector:** 300°C, FID  
**Carrier Gas:** 28 cm/sec., Helium

- |              |              |               |               |
|--------------|--------------|---------------|---------------|
| 1. C-14:0    | 5. C-18:1 ω9 | 9. C-18:3 ω9  | 13. C-22:4 ω6 |
| 2. C-16:0    | 6. C-18:1 ω7 | 10. C-20:3 ω6 | 14. C-22:5 ω3 |
| 3. C-16:1 ω7 | 7. C-18:2 ω6 | 11. C-20:4 ω6 | 15. C-22:6 ω3 |
| 4. C-18:0    | 8. C-18:3 ω6 | 12. C-20:5 ω3 |               |



# QUADREX



PO Box 3881, Woodbridge, CT 06525 • (203) 393-3112 • FAX (203) 393-0391  
TOLLFREE: 800-275-7033 • E-MAIL: tech@quadrexcorp.com • WEB: www.quadrexcorp.com