



GC CAPILLARY COLUMN APPLICATIONS: Fames

PUFA 2

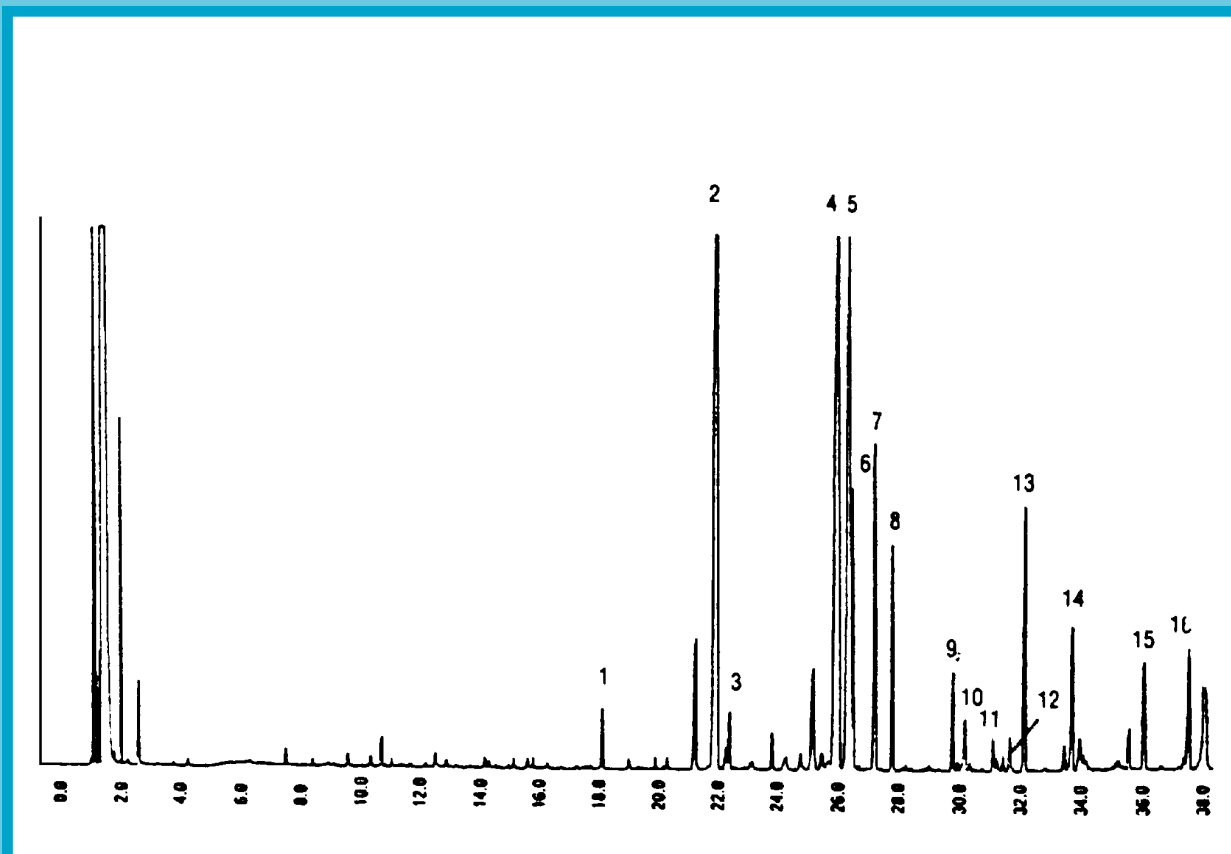
Animal Source

COLUMN: BTR-CW, Carbowax/BTR - Oxygen Resistant
30M. x 0.25mm I.D. x 0.25µm film
Cat. No.: BTR-CW-30-0.25F

Temperature: 60° (5 min. hold) (10°/min.) - 150° - (4°/min) - 240°C

Injector: 230°C
Detector: 250°C, FID
Carrier Gas: 40 cm/sec., Helium

- | | | | |
|--------------|---------------|---------------|---------------|
| 1. C-14:0 | 6. C-18:1 ω7 | 11. C-20:2 ω6 | 14. C-22:5 ω3 |
| 2. C-16:0 | 7. C-18:2 ω6 | 12. C-20:3 ω6 | 15. C-22:6 ω3 |
| 3. C-16:1 ω7 | 8. C-18:3 ω6 | 11. C-20:4 ω6 | |
| 4. C-18:0 | 9. C-20:1 ω11 | 12. C-20:5 ω3 | |
| 5. C-18:1 ω9 | 10. C-20:1 ω9 | 13. C-22:4 ω6 | |



QUADREX



PO Box 3881, Woodbridge, CT 06525 • (203) 393-3112 • FAX (203) 393-0391
TOLLFREE: 800-275-7033 • E-MAIL: tech@quadrexcorp.com • WEB: www.quadrexcorp.com