



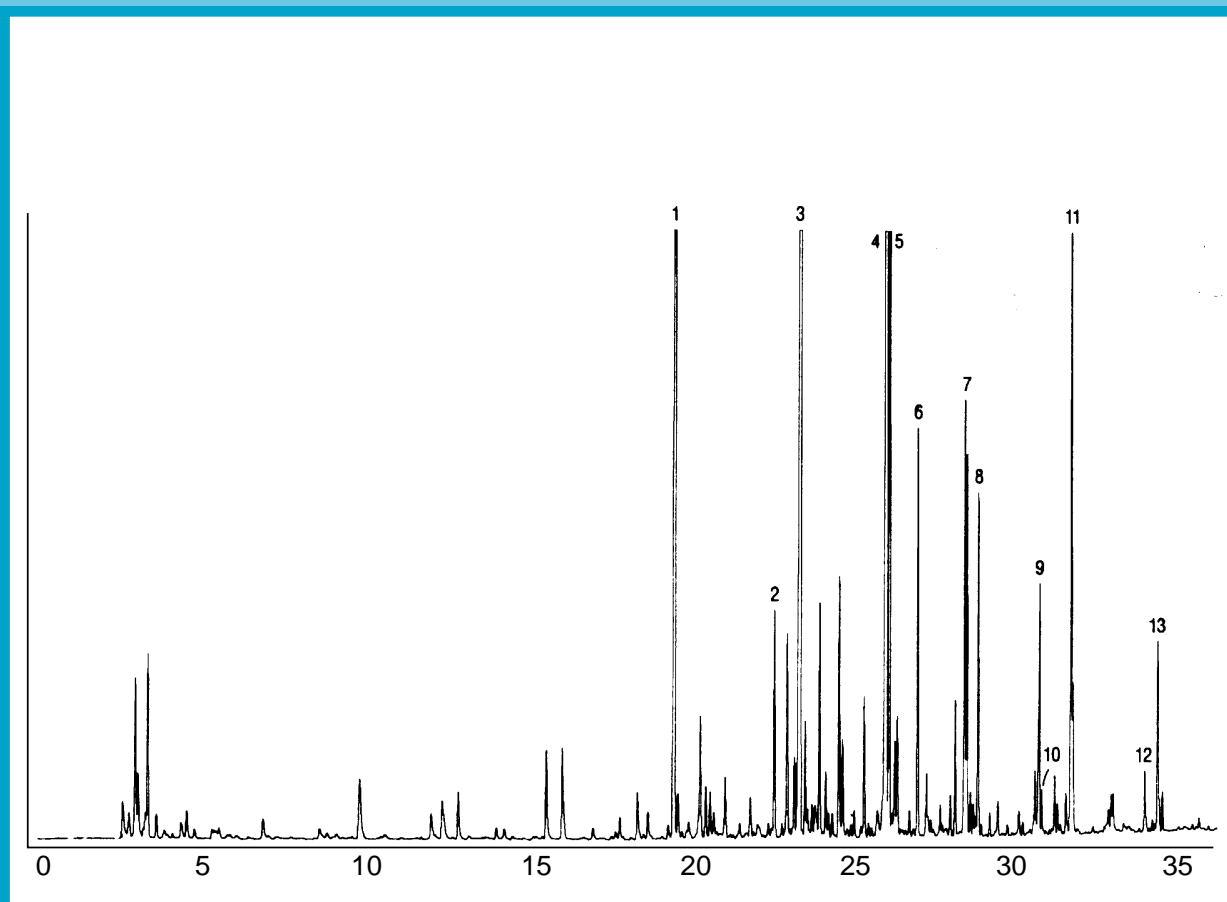
GC CAPILLARY COLUMN APPLICATIONS: Fames

PUFA 1 Marine Source

COLUMN: 007-23, Bonded Cyanopropyl Polysiloxane
50M. x 0.25mm I.D. x 0.25 μ m film
Cat. No.: 007-23-50-0.25F

Temperature: 60° (5°/min.) - 260°C
Injector: 230°C
Detector: 300°C, FID
Carrier Gas: 28 cm/sec., Helium

- | | | | |
|----------------------|----------------------|-----------------------|-----------------------|
| 1. C-14:0 | 5. C-18:1 ω 7 | 9. C-22:1 ω 11 | 13. C-22:6 ω 3 |
| 2. C-16:0 | 6. C-18:2 ω 6 | 10. C-22:1 ω 9 | |
| 3. C-16:1 ω 7 | 7. C-20:1 ω 9 | 11. C-20:5 ω 3 | |
| 4. C-18:1 ω 9 | 8. C-18:4 ω 3 | 12. C-22:5 ω 3 | |



QUADREX



PO Box 3881, Woodbridge, CT 06525 • (203) 393-3112 • FAX (203) 393-0391
TOLLFREE: 800-275-7033 • E-MAIL: tech@quadrexcorp.com • WEB: www.quadrexcorp.com