



GC CAPILLARY COLUMN

APPLICATIONS: **Clinical/ Toxicological**

Morphine Substitute Standards

COLUMN: 007-17, (50% Phenyl) Methylpolysiloxane
25M. x 0.32mm I.D. x 0.25 μ m film
Cat. No.: 007-17-25W-0.25F

Temperature: 170° (10°/min.) -280°C

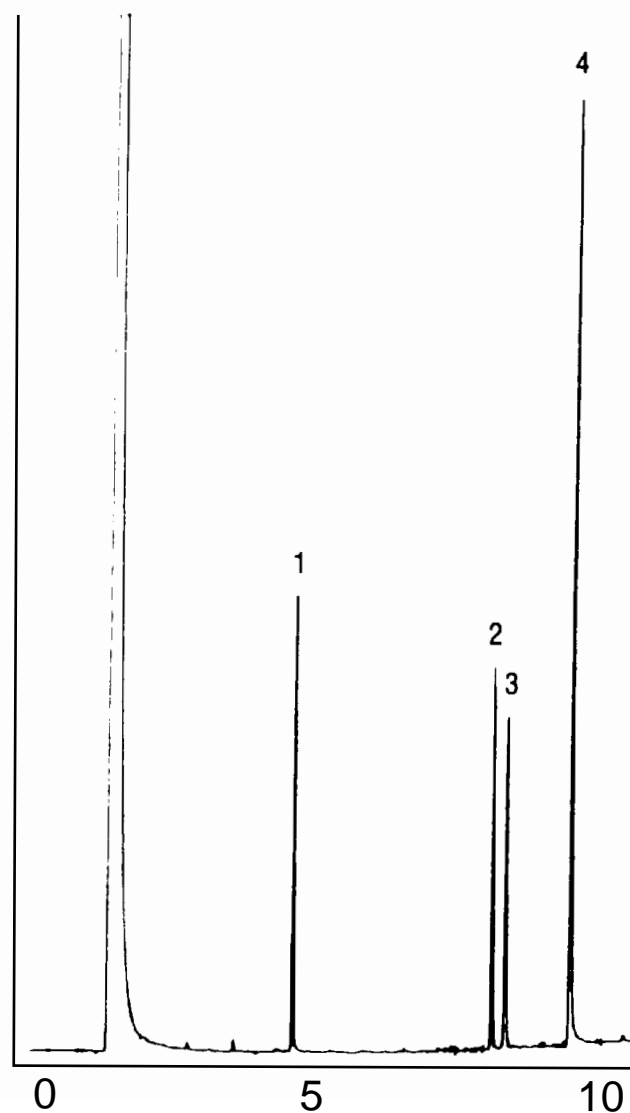
Injector: 230°C

Detector: 300°C, FID

Carrier Gas: 23 cm/sec., Helium

1. Meperidine
2. Pentazocaine

3. Methadone
4. d-Methorphan



QUADREX



PO Box 3881, Woodbridge, CT 06525 • (203) 393-3112 • FAX (203) 393-0391
TOLLFREE: 800-275-7033 • E-MAIL: tech@quadrexcorp.com • WEB: www.quadrexcorp.com