



# GC CAPILLARY COLUMN APPLICATIONS: High-Temp Aluminum Clad

## Microcrystalline Wax

**COLUMN:** 400-1HT, Dimethylpolysiloxane -  
Aluminum-Clad  
10M. x 0.25mm I.D. x 0.1µm film  
Cat. No.: 400-1HT-10-0.1F

**Temperature:** 60° (1min. hold)  
(35°/min.) - 200°C - (10°/min) -  
410°C

**Injector:** cold on-column, 1µL

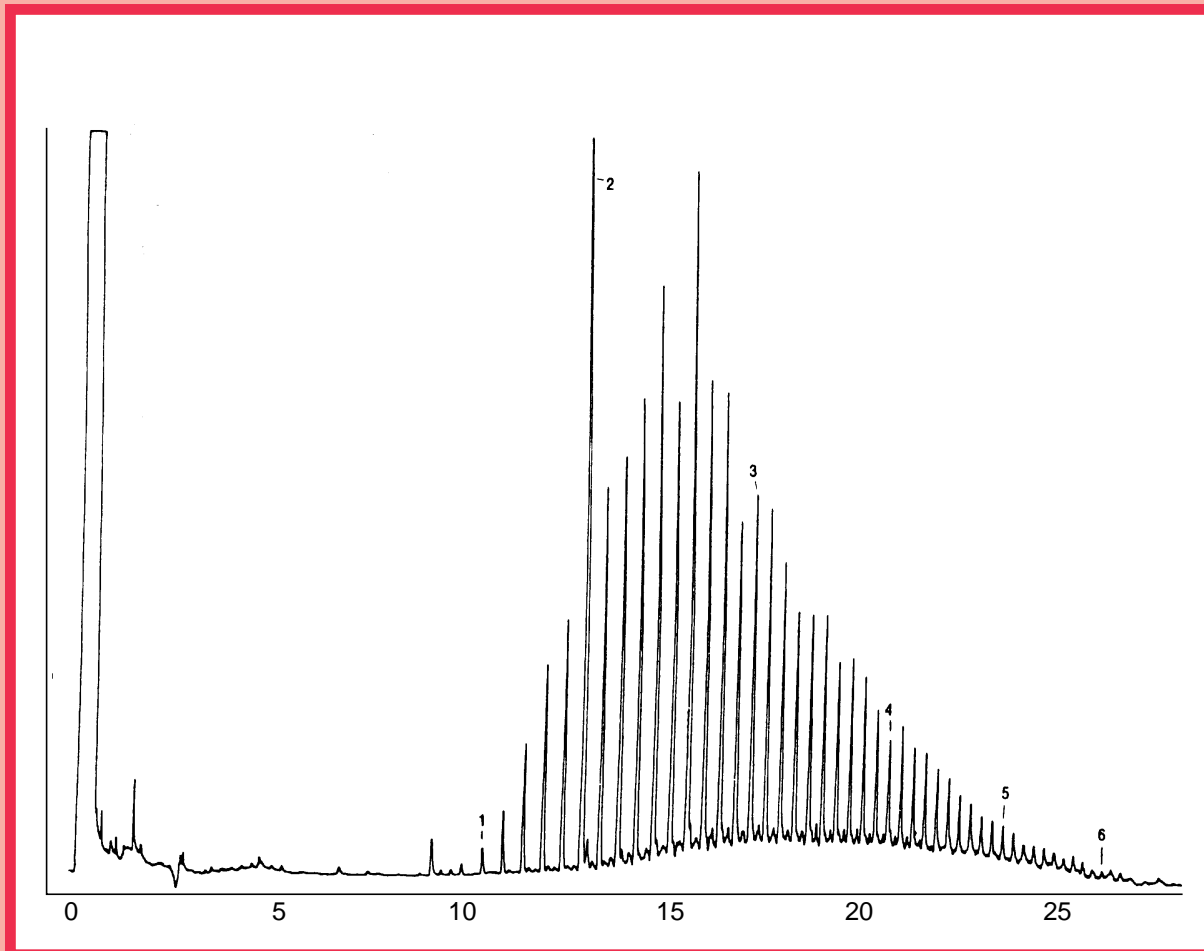
**Detector:** 450°C, FID

**Carrier Gas:** 26 cm/sec., H<sub>2</sub>.

1. C-35  
2. C-40

3. C-50  
4. C-60

5. C-70  
6. C-80



**QUADREX**



PO Box 3881, Woodbridge, CT 06525 • (203) 393-3112 • FAX (203) 393-0391  
TOLLFREE: 800-275-7033 • E-MAIL: tech@quadrexcorp.com • WEB: www.quadrexcorp.com