



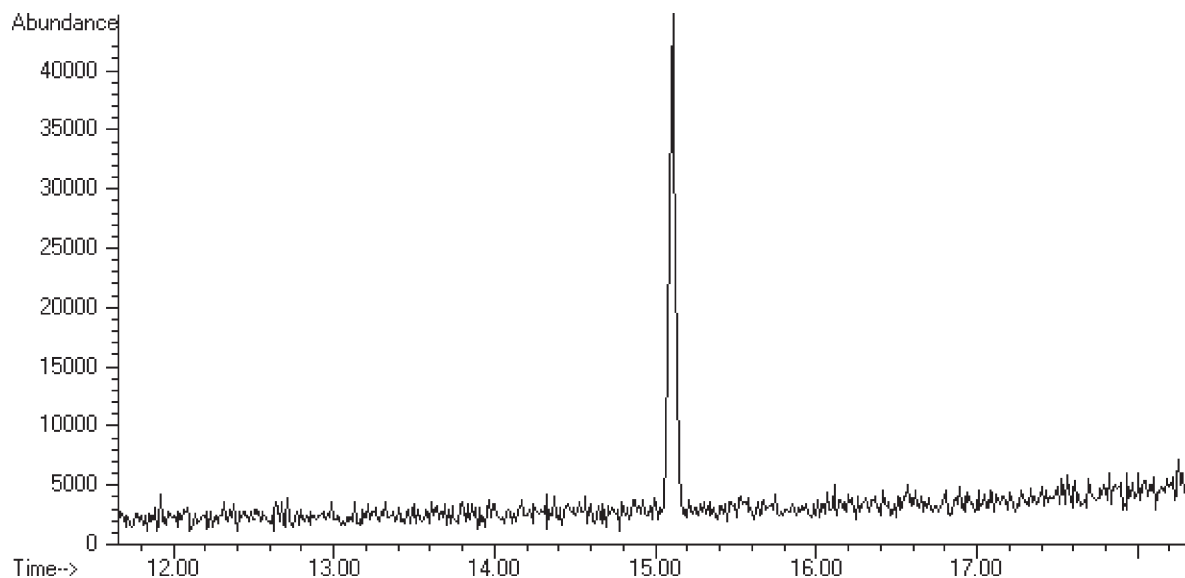
GC CAPILLARY COLUMN APPLICATIONS: Fames

**Methyl
Stearate**

**1.0ppm,
50-500 a.m.u.**

COLUMN: 007-5MS, Silphenylene Polysiloxane
30M. x 0.25mm x 0.25 μ m film
Cat No.: 007-5MS-30-0.25F

Temperature: 100° (10°/min.) - 320°C
Injector: 225°C
Detector: MSD, Transfer Line: 300°C
Injection: 1.0 μ L, splitless



PO Box 3881, Woodbridge, CT 06525 • (203) 393-3112 • FAX (203) 393-0391
TOLLFREE: 800-275-7033 • E-MAIL: tech@quadrexcorp.com • WEB: www.quadrexcorp.com

QUADREX

