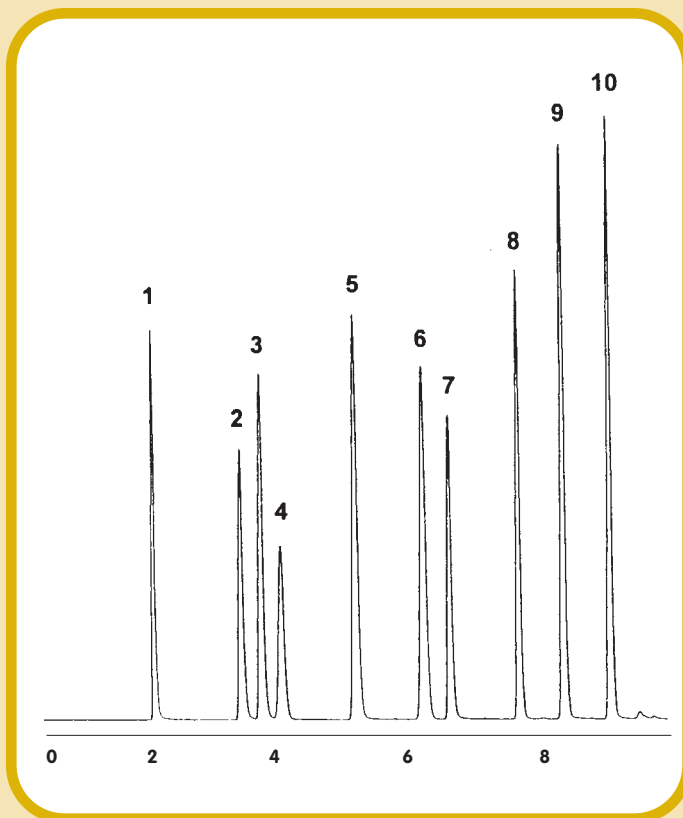




GC CAPILLARY COLUMN APPLICATIONS:

Flavors/Fragrances



L.M.W. Amines

COLUMN: 007-1, Dimethylpolysiloxane PHAT Phase™
20M. x 0.18mm I.D. x 6.0µm film
Cat. No.: 007-1-20HS-6.0F

Temperature: 45° (4.5 min. hold)(16°/min.) - 230°C

Injector: 220°C

Detector: 300°C, FID

Carrier Gas: 22psi, Helium

- | | |
|-------------------|--------------------|
| 1. methylamine | 6. tert-butylamine |
| 2. dimethylamine | 7. propylamine |
| 3. ethylamine | 8. diethylamine |
| 4. trimethylamine | 9. isobutylamine |
| 5. isopropylamine | 10. butylamine |



PO Box 3881, Woodbridge, CT 06525 • (203) 393-3112 • FAX (203) 393-0391
TOLLFREE: 800-275-7033 • E-MAIL: tech@quadrexcorp.com • WEB: www.quadrexcorp.com