



GC CAPILLARY COLUMN

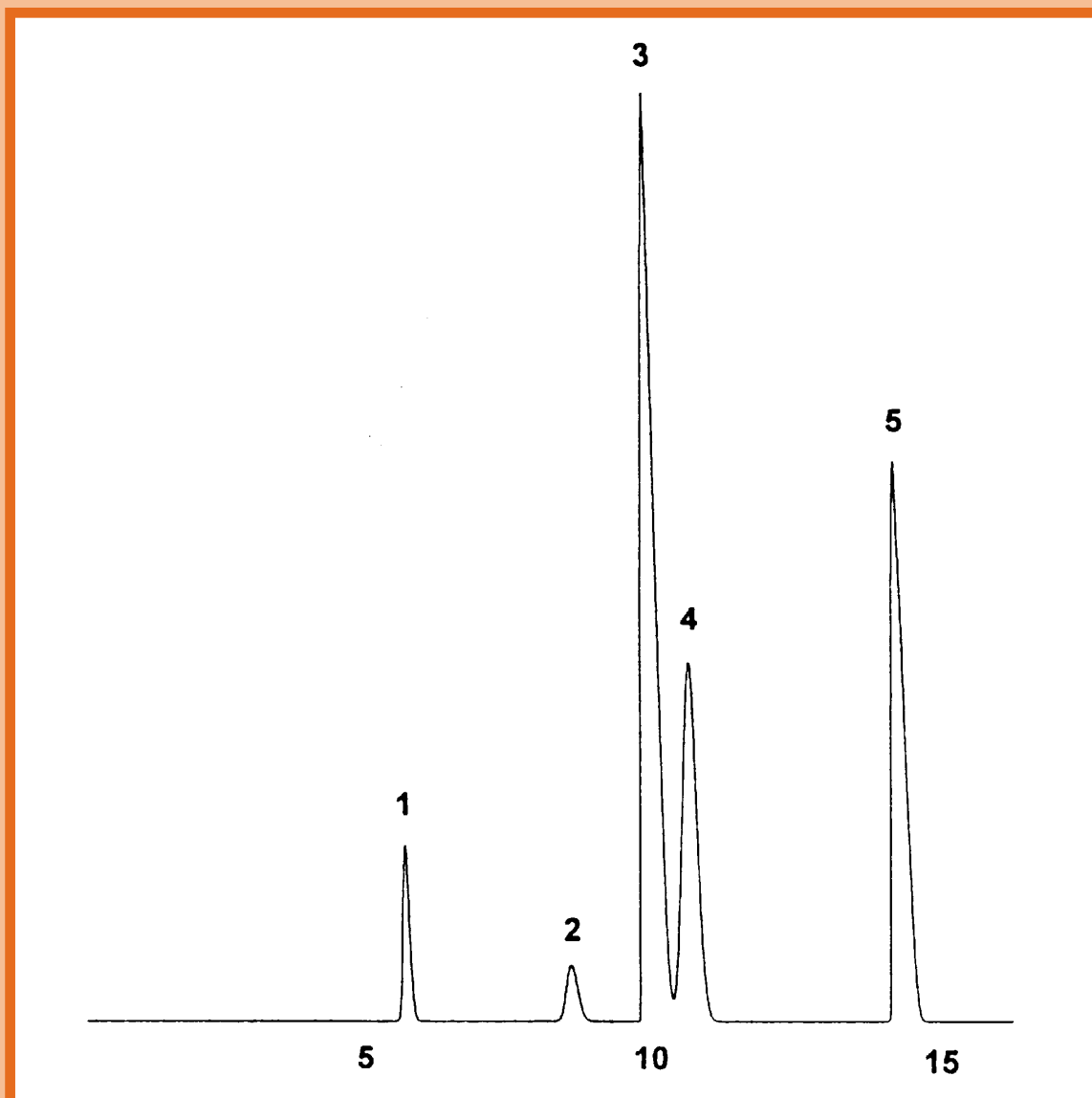
APPLICATIONS: Industrial Solvents

Ethylene Oxide

COLUMN: 007-1, Dimethylpolysiloxane
30M. x 0.32mm I.D. x 10.0µm film
Cat. No.: 007-1-30W-10.0F

Temperature: 50° (3 min. hold) (6°/min.) - 200°C
Injector: 220°C
Detector: 290°C, FID
Carrier Gas: 26 cm/sec., Helium

- | | | |
|-------------------|-----------------------|---------------|
| 1. ethylene oxide | 3. methylene chloride | 5. chloroform |
| 2. Freon 11 | 4. Freon 113 | |



QUADREX



PO Box 3881, Woodbridge, CT 06525 • (203) 393-3112 • FAX (203) 393-0391
TOLLFREE: 800-275-7033 • E-MAIL: tech@quadrexcorp.com • WEB: www.quadrexcorp.com