



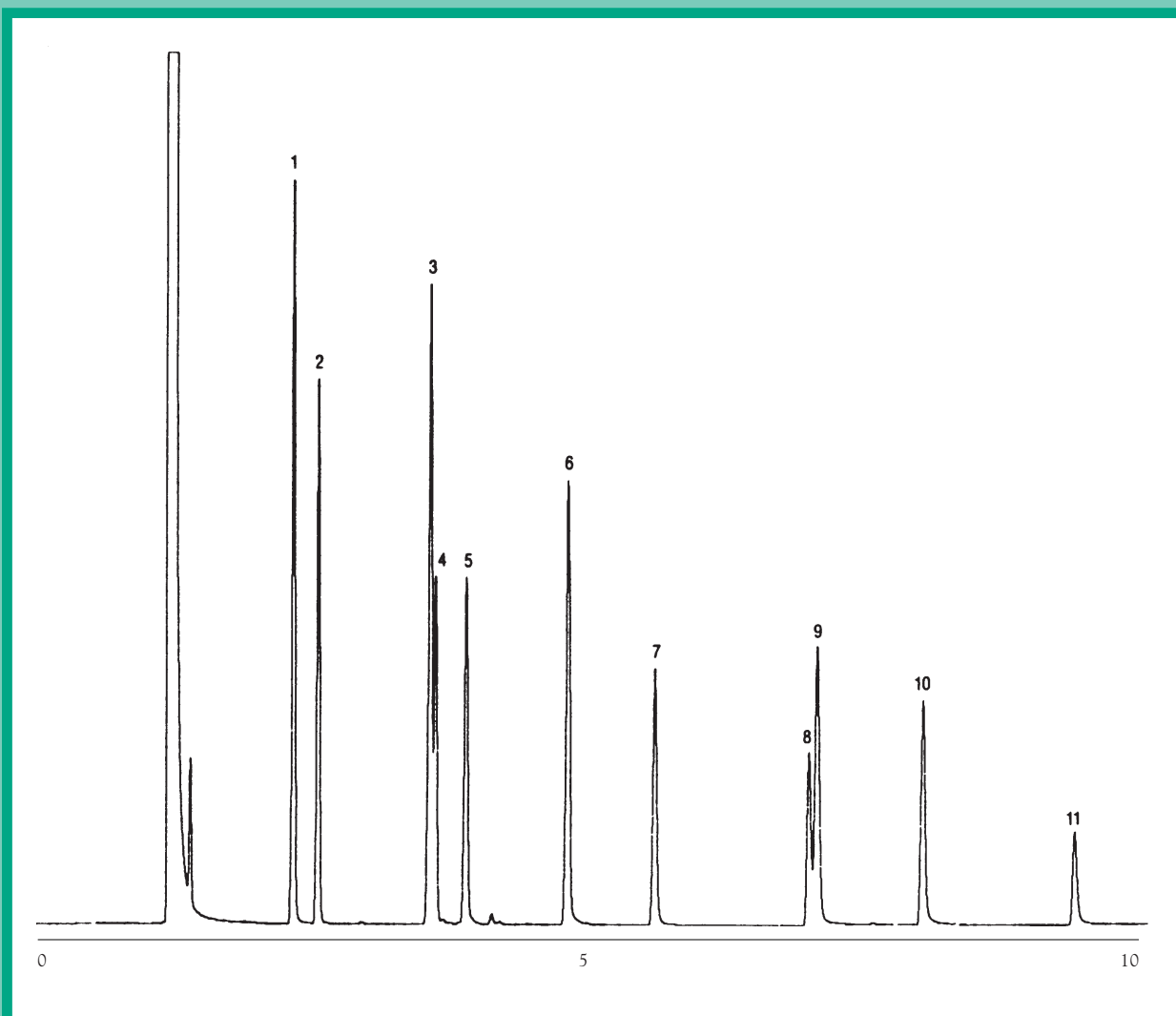
GC CAPILLARY COLUMN APPLICATIONS: Environmental

EPA Method 605 Phenols

COLUMN: 007-5* (5% Phenyl) Methylpolysiloxane
30M. 0.53mm I.D. x 1.0µm film
Cat. No.: 007-5-30V-1.0F

Temperature: 110° (8°/min) - 290°C
Injector: 210°C
Detector: 210°C, FID
Carrier Gas: 10 ml/min., Helium

- | | |
|----------------------------|--------------------------------|
| 1. phenol | 7. 2,4,6-trichlorophenol |
| 2. 2-chlorophenol | 8. 2,4-dinitrophenol |
| 3. 2,4-dimethylphenol | 9. 4-nitrophenol |
| 4. 2-nitrophenol | 10. 2-methyl-4,6-dinitrophenol |
| 5. 2,4-dichlorophenol | 11. pentachlorophenol |
| 6. 4-chloro-3-methylphenol | |



QUADREX



PO Box 3881, Woodbridge, CT 06525 • (203) 393-3112 • FAX (203) 393-0391
TOLLFREE: 800-275-7033 • E-MAIL: tech@quadrexcorp.com • WEB: www.quadrexcorp.com