



GC CAPILLARY COLUMN APPLICATIONS: Environmental

EPA Method 601 (with Cryogenic Focus)

COLUMN:

007-624, Cyanopropyl Phenyl
Methylpolysiloxane
50M. x 0.53mm I.D. x 3.0µm film
Cat. No.: 007-624-50V-3.0F

Temperature:

35° (4 min. hold) (10°/min.) - 280°C

Injector:

220°C

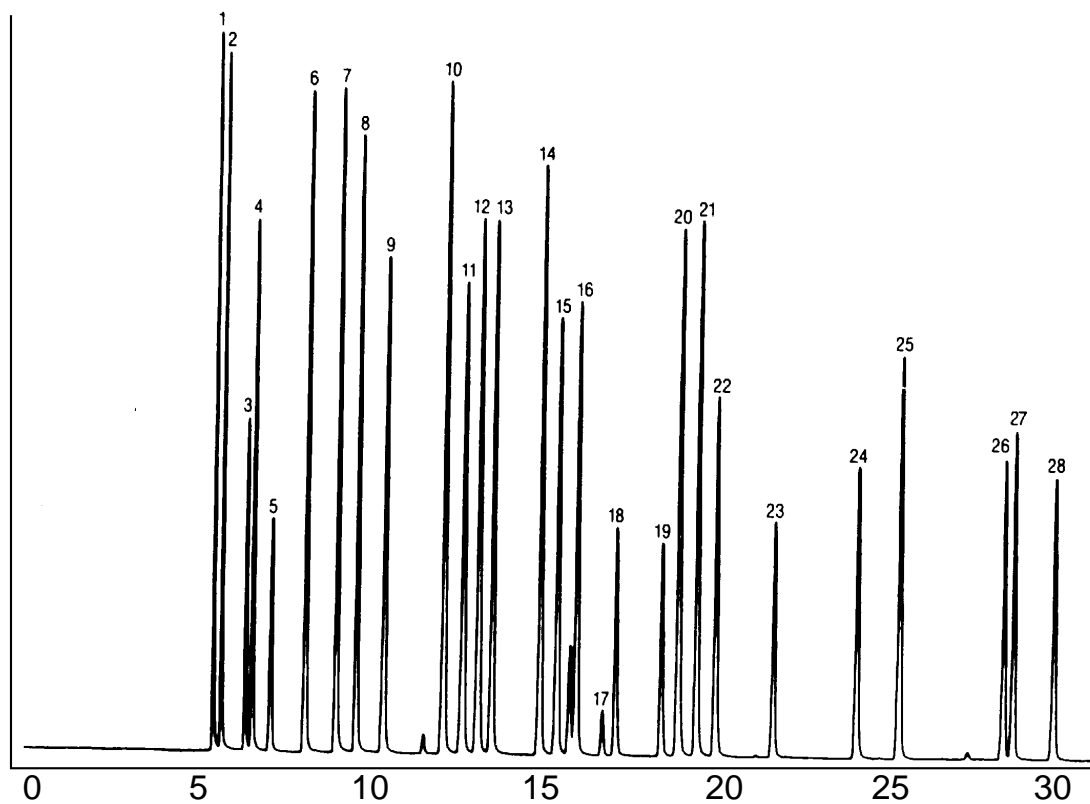
Detector:

EICD

Carrier Gas:

7 ml/min., Helium

- | | |
|-------------------------------|-------------------------------|
| 1. chloromethane | 15. 1,2-dichloropropane |
| 2. vinyl chloride | 16. bromodichloromethane |
| 3. bromomethane | 17. 2-chloroethylvinyl ether |
| 4. chloroethane | 18. trans 1,3-dichloropropene |
| 5. trichlorofluoromethane | 19. cis-1,2-dichloropropene |
| 6. 1,1-dichloroethylene | 20. 1,1,2-trichloroethene |
| 7. methylene chloride | 21. tetrachloroethylene |
| 8. trans 1,2-dichloroethylene | 22. dibromochloromethane |
| 9. 1,1-dichloroethane | 23. chlorobenzene |
| 10. chloroform | 24. bromoform |
| 11. 1,1,1-trichloroethane | 25. 1,1,1,2-tetrachloroethane |
| 12. carbon tetrachloride | 26. 1,2-dichlorobenzene |
| 13. 1,2-dichloroethane | 27. 1,3-dichlorobenzene |
| 14. trichloroethylene | 28. 1,4-dichlorobenzene |



QUADREX



PO Box 3881, Woodbridge, CT 06525 • (203) 393-3112 • FAX (203) 393-0391
TOLLFREE: 800-275-7033 • E-MAIL: tech@quadrexcorp.com • WEB: www.quadrexcorp.com