



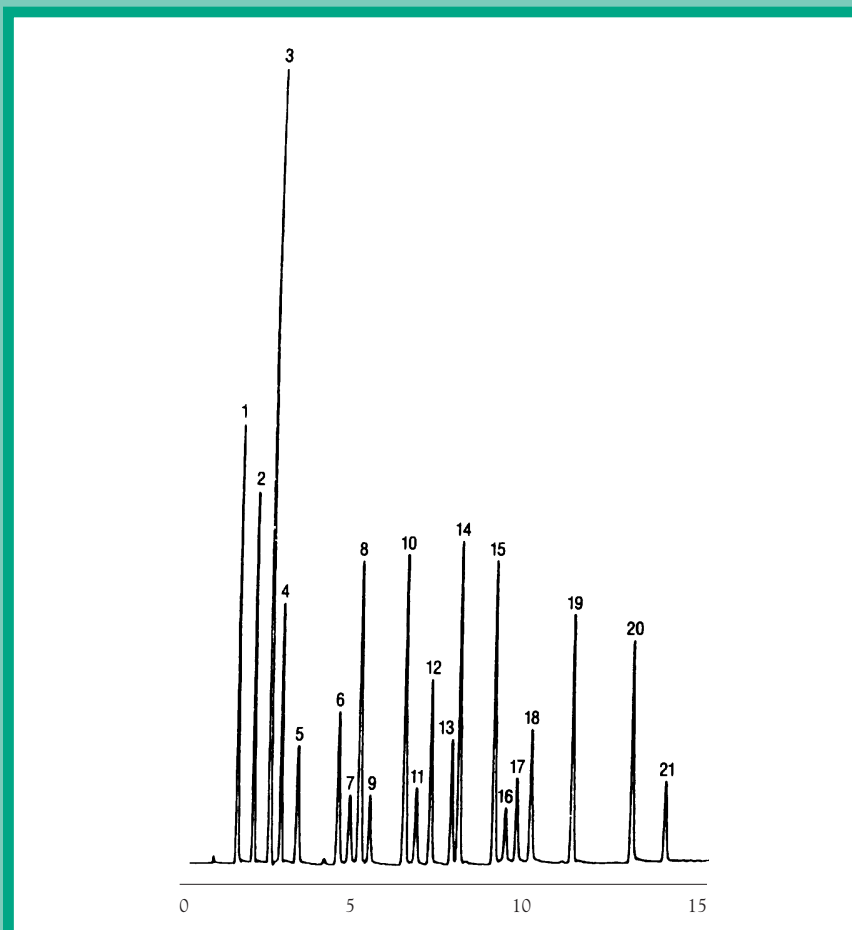
# GC CAPILLARY COLUMN APPLICATIONS: Environmental

## EPA Method 601 Standards

**COLUMN:** 007-624, Cyanopropyl Phenyl Methylpolysiloxane  
30M. x 0.53mm I.D. x 3.0µm film  
Cat. No.: 007-624-30V-3.0F

**Temperature:** 35° (2 min. hold) (7°/min.) - 125°C  
**Injector:** 220°C  
**Detector:** 300°C, ECD  
**Carrier Gas:** 6 ml/min., Helium

- |                               |                               |
|-------------------------------|-------------------------------|
| 1. trichlorofluoromethane     | 13. 2-chloroethylvinyl ether  |
| 2. 1,1-dichloroethylene       | 14. trans 1,3-dichloropropene |
| 3. methylene chloride         | 15. cis-1,2-dichloropropene   |
| 4. trans 1,2-dichloroethylene | 16. 1,1,2-trichloroethene     |
| 5. 1,1-dichloroethane         | 17. tetrachloroethylene       |
| 6. chloroform                 | 18. dibromochloromethane      |
| 7. 1,1,1-trichloroethane      | 19. chlorobenzene             |
| 8. carbon tetrachloride       | 20. bromoform                 |
| 9. 1,2-dichloroethane         | 21. 1,1,1,2-tetrachloroethane |
| 10. trichloroethylene         | 22. 1,2-dichlorobenzene       |
| 11. 1,2-dichloropropane       | 23. 1,3-dichlorobenzene       |
| 12. bromodichloromethane      | 24. 1,4-dichlorobenzene       |



**QUADREX**



PO Box 3881, Woodbridge, CT 06525 • (203) 393-3112 • FAX (203) 393-0391  
TOLLFREE: 800-275-7033 • E-MAIL: [tech@quadrexcorp.com](mailto:tech@quadrexcorp.com) • WEB: [www.quadrexcorp.com](http://www.quadrexcorp.com)