



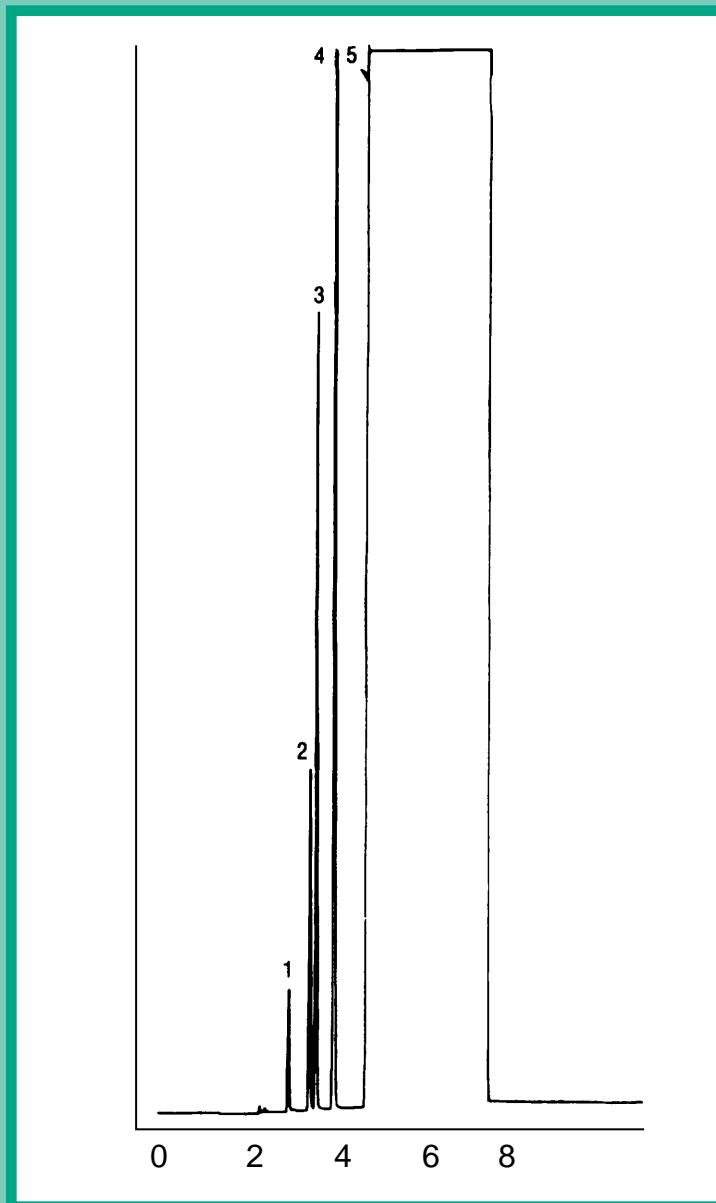
GC CAPILLARY COLUMN APPLICATIONS: Environmental

**EPA Method
601
Gases Only
Direct
Injection**

COLUMN: 007-624, Cyanopropyl Phenyl Methylpolysiloxane
30M. x 0.53mm I.D. x 3.0µm film
Cat. No.: 007-624-30V-3.0F

Temperature: 30°C Isothermal
Injector: 70°C
Detector: FID
Carrier Gas: 5 ml/min., Helium

- | | | |
|----------------------------|-------------------|-------------|
| 1. dichlorodifluoromethane | 3. vinyl chloride | 5. methanol |
| 2. chloromethane | 4. bromomethane | |



QUADREX



PO Box 3881, Woodbridge, CT 06525 • (203) 393-3112 • FAX (203) 393-0391
TOLLFREE: 800-275-7033 • E-MAIL: tech@quadrexcorp.com • WEB: www.quadrexcorp.com