



GC CAPILLARY COLUMN APPLICATIONS: Environmental

EPA Method 551 Chlorination Disinfection Byproducts in Drinking Water

COLUMN: 007-1, Dimethylpolysiloxane
30M. x 0.32mm I.D. x 0.5µm film
Cat. No.: 007-1-30W-0.5F

Temperature: 35° (10 min. hold) (6°/min.) - 150°C
(4 min. hold)

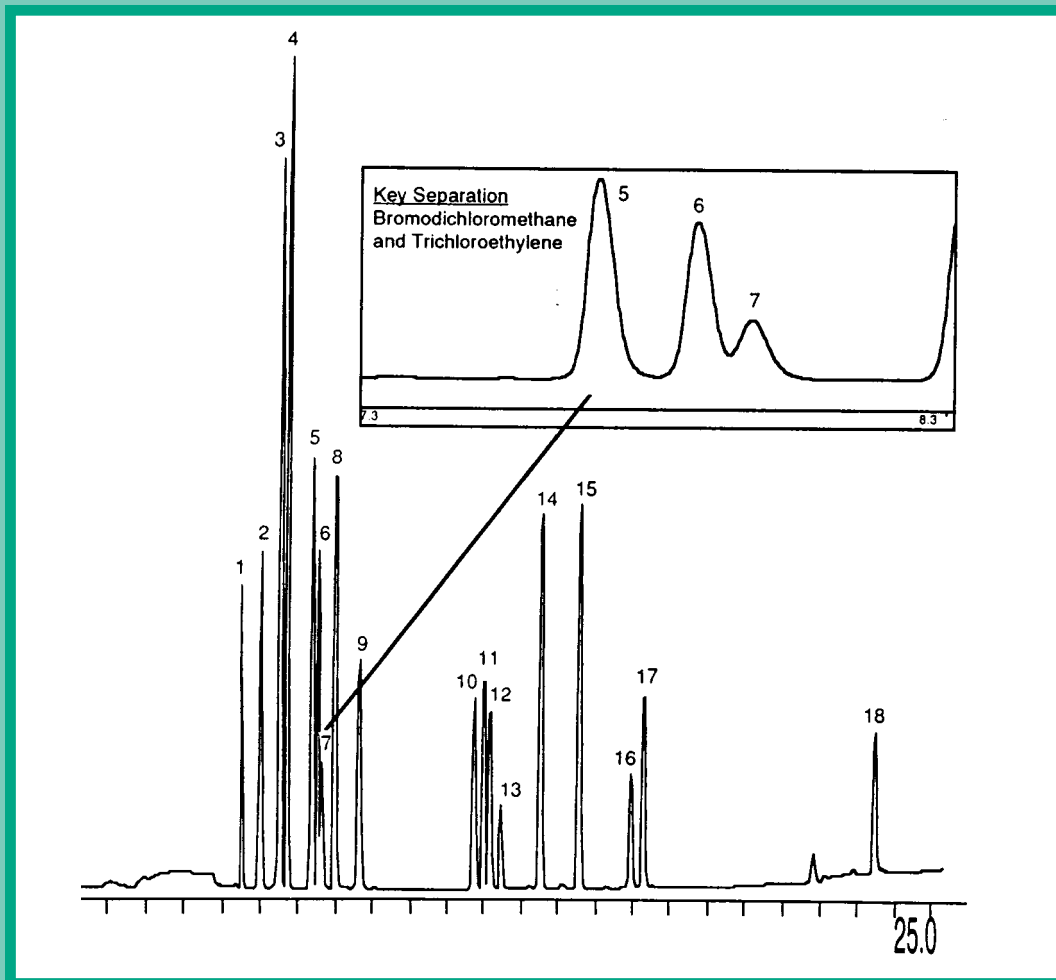
Injector: 220°C

Detector: 300°C, ECD

Carrier Gas: 1ml/min, Helium

Injection: 2µL of 1ppb extract

- | | |
|----------------------------|--|
| 1. chloroform | 10. chloropicrin |
| 2. 1,1,1-trichloroethane | 11. dibromochloromethane |
| 3. carbon tetrachloride | 12. bromochloroacetonitrile |
| 4. trichloroacetonitrile | 13. 1,2-dibromoethane (EDB) |
| 5. dichloroacetonitrile | 14. tetrachloroethylene |
| 6. bromodichloromethane | 15. 1,1,1-tetrachloropropanone |
| 7. trichloroethylene | 16. bromoform |
| 8. chloral hydrate | 17. dibromoacetonitrile |
| 9. 1,1-dichloropropanone-2 | 18. 1,2-dibromo-3-chloropropane (DBCP) |



PO Box 3881, Woodbridge, CT 06525 • (203) 393-3112 • FAX (203) 393-0391
TOLLFREE: 800-275-7033 • E-MAIL: tech@quadrexcorp.com • WEB: www.quadrexcorp.com

