



GC CAPILLARY COLUMN APPLICATIONS: Environmental

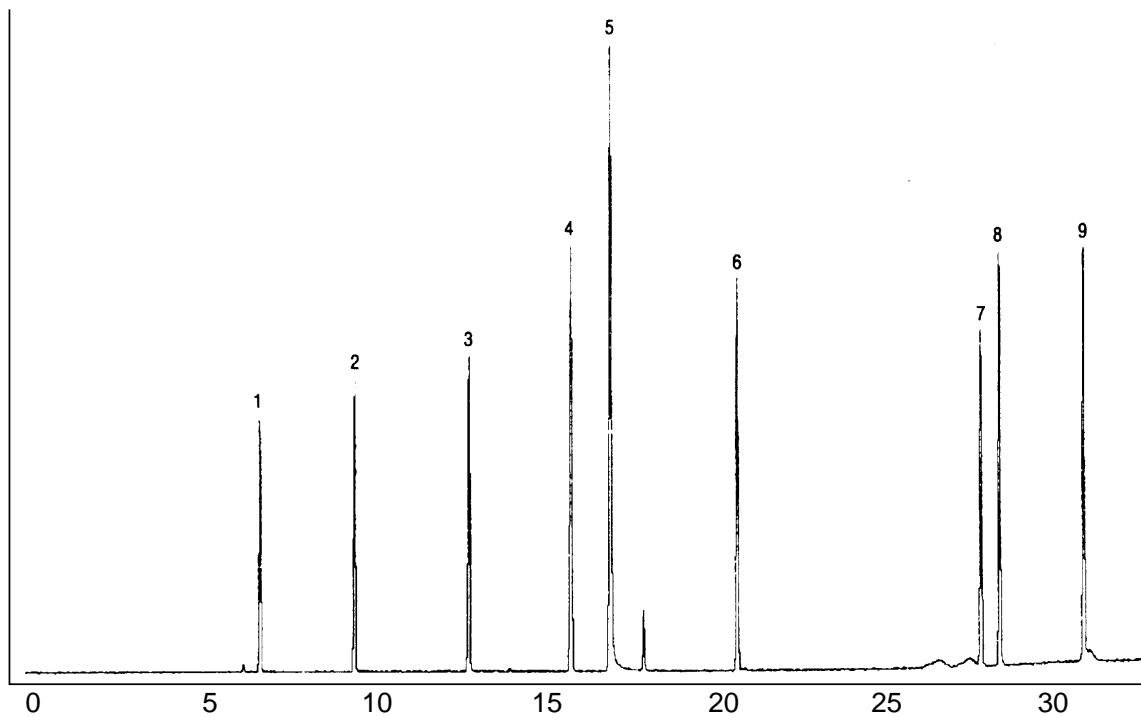
EPA Method 525

Phthalates

COLUMN: 007-5,* (5% Phenyl) Methylpolysiloxane
30M. x 0.25mm I.D. x 0.25µm film
Cat. No.: 007-5-30-0.25F

Temperature: 80° (6°/min.) - 260°C
Injector: 230°C
Detector: MSD
Carrier Gas: 28 cm/sec., Helium

- | | |
|------------------------------|---------------------------------|
| 1. dimethylphthalate | 6. di-n-butyl phthalate |
| 2. diethylphthalate | 7. butylbenzylphthalate |
| 3. hexachlorocyclopentadiene | 8. bis (2-ethylhexyl) adipate |
| 4. hexachlorobenzene | 9. bis (2-ethylhexyl) phthalate |
| 5. pentachlorophenol | |



QUADREX



PO Box 3881, Woodbridge, CT 06525 • (203) 393-3112 • FAX (203) 393-0391
TOLLFREE: 800-275-7033 • E-MAIL: tech@quadrexcorp.com • WEB: www.quadrexcorp.com