



GC CAPILLARY COLUMN APPLICATIONS: Environmental

EPA Method 524.2

Drinking Water

COLUMN: 007-624, Cyanopropyl Phenyl Methylpolysiloxane
30M. x 0.25mm I.D. x 2.0µm film
Cat. No.: 007-624-30-2.0F

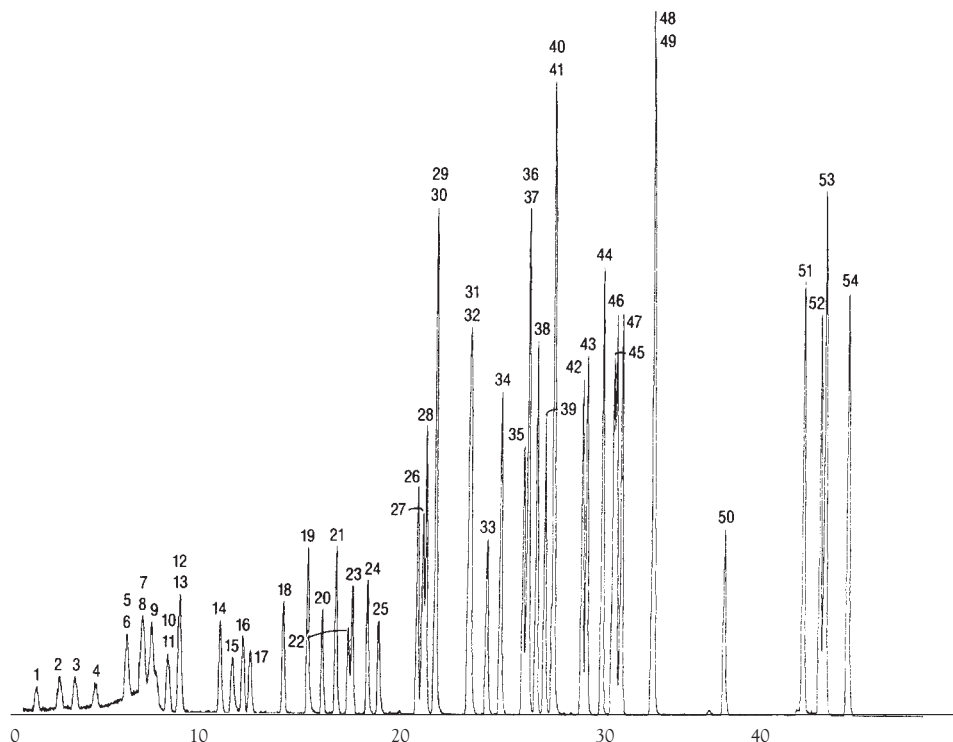
Temperature: 35° (2 min. hold) (6°/min.) - 150° - (2.5°/min.) - 240°C

Injector: 220°C

Detector: MSD

Carrier Gas: 28 cm/sec., Helium

- | | | |
|-------------------------------|-------------------------------|---------------------------------|
| 1. 1,1-dichloroethylene | 20. trans 1,3-dichloropropene | 38. n-propylbenzene |
| 2. methylene chloride | 21. 1,1,2-trichloroethane | 39. 2-chlorotoluene |
| 3. trans 1,2-dichloroethylene | 22. 1,3-dichloropropane | 40. 4-chlorotoluene |
| 4. 1,1-dichloroethane | 23. tetrachloroethene | 41. 1,3,5-trimethylbenzene |
| 5. 2,2-dichloropropane | 24. dibromochloromethane | 42. sec-butylbenzene |
| 6. cis 1,2-dichloroethylene | 25. 1,2-dibromoethane | 43. 1,2,4-trimethylbenzene |
| 7. bromochloromethane | 26. chlorobenzene | 44. tert-butylbenzene |
| 8. chloroform | 27. 1,1,1,2-tetrachloroethane | 45. 1,3-dichlorobenzene |
| 9. 1,1,1-trichloroethane | 28. ethylbenzene | 46. p-isopropyltoluene |
| 10. 1,1-dichloropropylene | 29. m-xylene | 47. 1,4-dichlorobenzene |
| 11. carbon tetrachloride | 30. p-xylene | 48. n-butylbenzene |
| 12. benzene | 31. o-xylene | 49. 1,2-dichlorobenzene |
| 13. 1,2-dichloroethane | 32. styrene | 50. 1,2-dibromo-3-chloropropane |
| 14. trichloroethylene | 33. bromoform | 51. 1,2,4-trichlorobenzene |
| 15. 1,2-dichloropropane | 34. isopropylbenzene | 52. hexachlorobutadiene |
| 16. dibromomethane | 35. 1,1,2,2-tetrachloroethane | 53. naphthalene |
| 17. bromodichloromethane | 36. 1,2,3-trichloropropane | 54. 1,2,3-trichlorobenzene |
| 18. cis-1,3-dichloropropene | 37. bromobenzene | |
| 19. toluene | | |



QUADREX



PO Box 3881, Woodbridge, CT 06525 • (203) 393-3112 • FAX (203) 393-0391
TOLLFREE: 800-275-7033 • E-MAIL: tech@quadrexcorp.com • WEB: www.quadrexcorp.com