



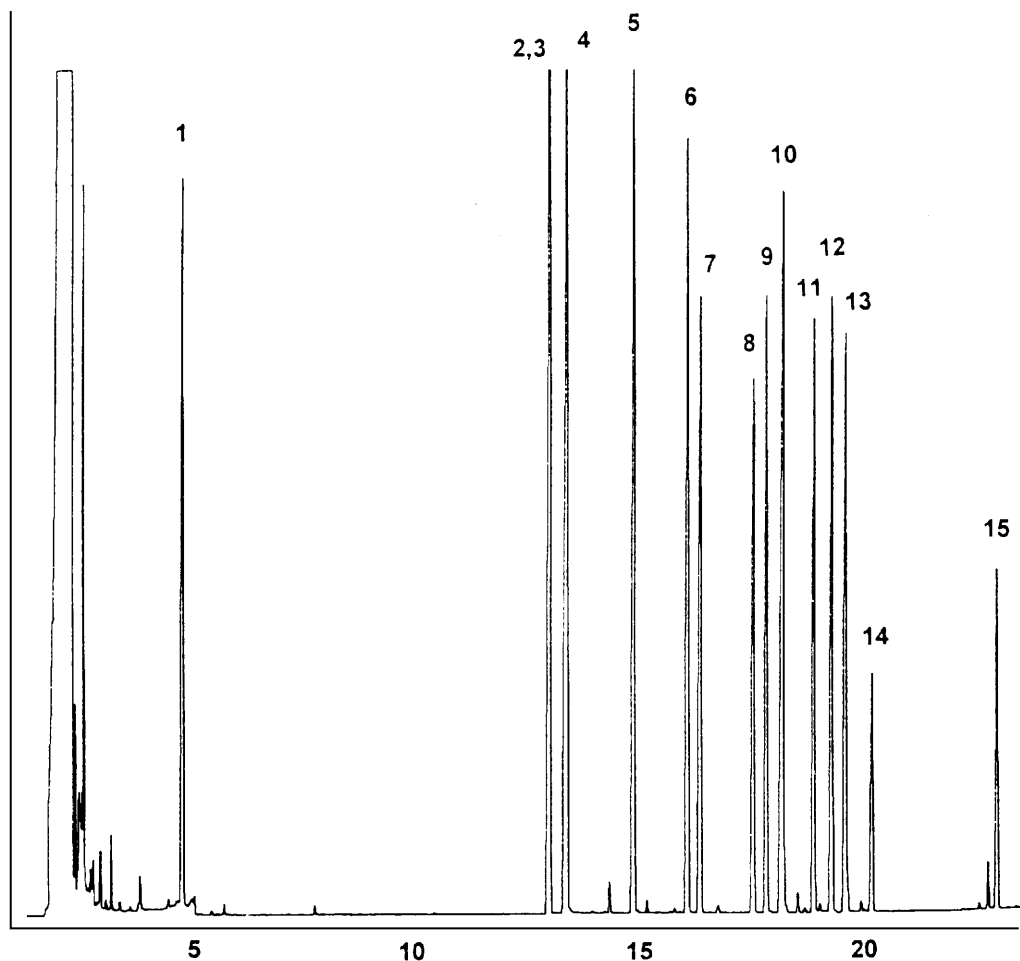
GC CAPILLARY COLUMN APPLICATIONS: Environmental

EPA Method 515 Herbicides

COLUMN: 007-1301, 6% Cyanopropyl Phenyl Methylpolysiloxane
30M. x 0.25mm I.D. x 0.5µm film
Cat. No.: 007-1301-30-0.5F

Temperature: 60° (10°/min.) - 300°C
Injector: 230°C
Detector: 310°C, ECD
Carrier Gas: 32 cm/sec., Helium

- | | |
|-------------------------|-----------------------|
| 1. dalapon | 9. chloramben |
| 2. dichlorobenzoic acid | 10. pentachlorophenol |
| 3. nitrophenol | 11. 2,4 - DB |
| 4. dicamba | 12. 2,4,5 - T |
| 5. dichloroprop | 13. dinoseb |
| 6. 2,4 - D | 14. 2,4,5 - TP |
| 7. picloram | 15. acifluorfen |
| 8. bentazon | |



QUADREX



PO Box 3881, Woodbridge, CT 06525 • (203) 393-3112 • FAX (203) 393-0391
TOLLFREE: 800-275-7033 • E-MAIL: tech@quadrexcorp.com • WEB: www.quadrexcorp.com