



GC CAPILLARY COLUMN APPLICATIONS: Environmental

**EPA Method
515**

**Methyl
Derivatives of
Chlorinated
Herbicides**

Column: 007-5,* (5% Phenyl) Methylpolysiloxane
25M. x 0.25mm I.D. x 0.25µm film
Cat. No.: 007-5-25-0.25F

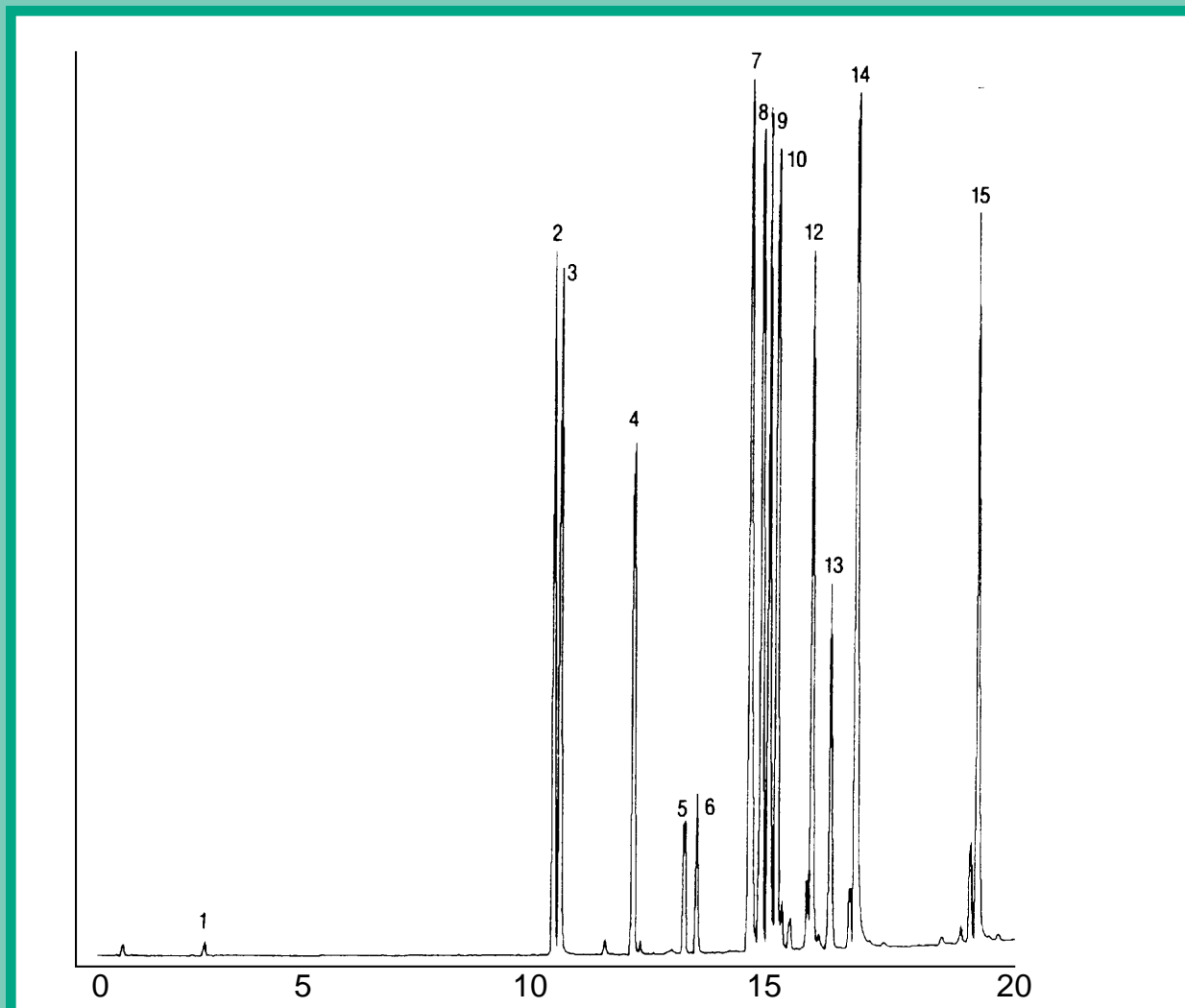
Temperature: 60° (12°/min.) - 280°C

Injector: 230°C

Detector: 310°C, ECD

Carrier Gas: 28 cm / sec., Helium

- | | |
|-------------------------|-----------------------|
| 1. dalapon | 9. chloramben |
| 2. dichlorobenzoic acid | 10. pentachlorophenol |
| 3. nitrophenol | 11. 2,4-DB |
| 4. dicamba | 12. 2,4,5-T |
| 5. dichloroprop | 13. dinoseb |
| 6. 2,4-D | 14. 2,4,5-TP |
| 7. picloram | 15. acifluorfen |
| 8. bentazon | |



QUADREX



PO Box 3881, Woodbridge, CT 06525 • (203) 393-3112 • FAX (203) 393-0391
TOLLFREE: 800-275-7033 • E-MAIL: tech@quadrexcorp.com • WEB: www.quadrexcorp.com