



GC CAPILLARY COLUMN APPLICATIONS: Environmental

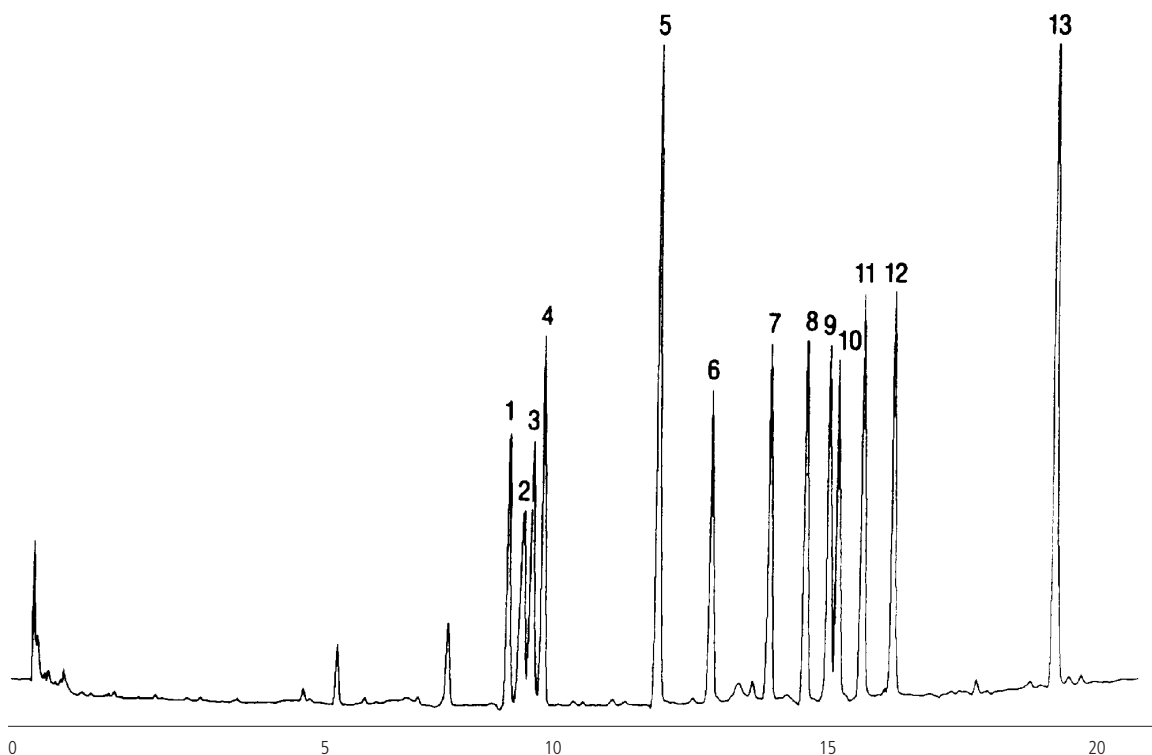
**EPA
Method
505**

**Organohalide
Pesticides**

COLUMN: 007-5* (5% Phenyl) Methylpolysiloxane
30M. x 0.53mm I.D. x 1.0µm film
Cat. No.: 007-5-30V-1.0F

Temperature: 120° (6°/min.) - 280°C
Injector: 250°C
Detector: 320°C, ECD
Carrier Gas: 8ml/min., Helium

- | | | |
|----------------------|-----------------------|---------------------|
| 1. hexachlorobenzene | 6. alachlor | 11. trans-nonachlor |
| 2. simazine | 7. aldrin | 12. dieldrin |
| 3. atrazine | 8. heptachlor epoxide | 13. methoxychlor |
| 4. lindane | 9. g-chlordane | |
| 5. heptachlor | 10. a-chlordane | |



QUADREX



PO Box 3881, Woodbridge, CT 06525 • (203) 393-3112 • FAX (203) 393-0391
TOLLFREE: 800-275-7033 • E-MAIL: tech@quadrexcorp.com • WEB: www.quadrexcorp.com