



GC CAPILLARY COLUMN APPLICATIONS: Environmental

**EPA Method
504**

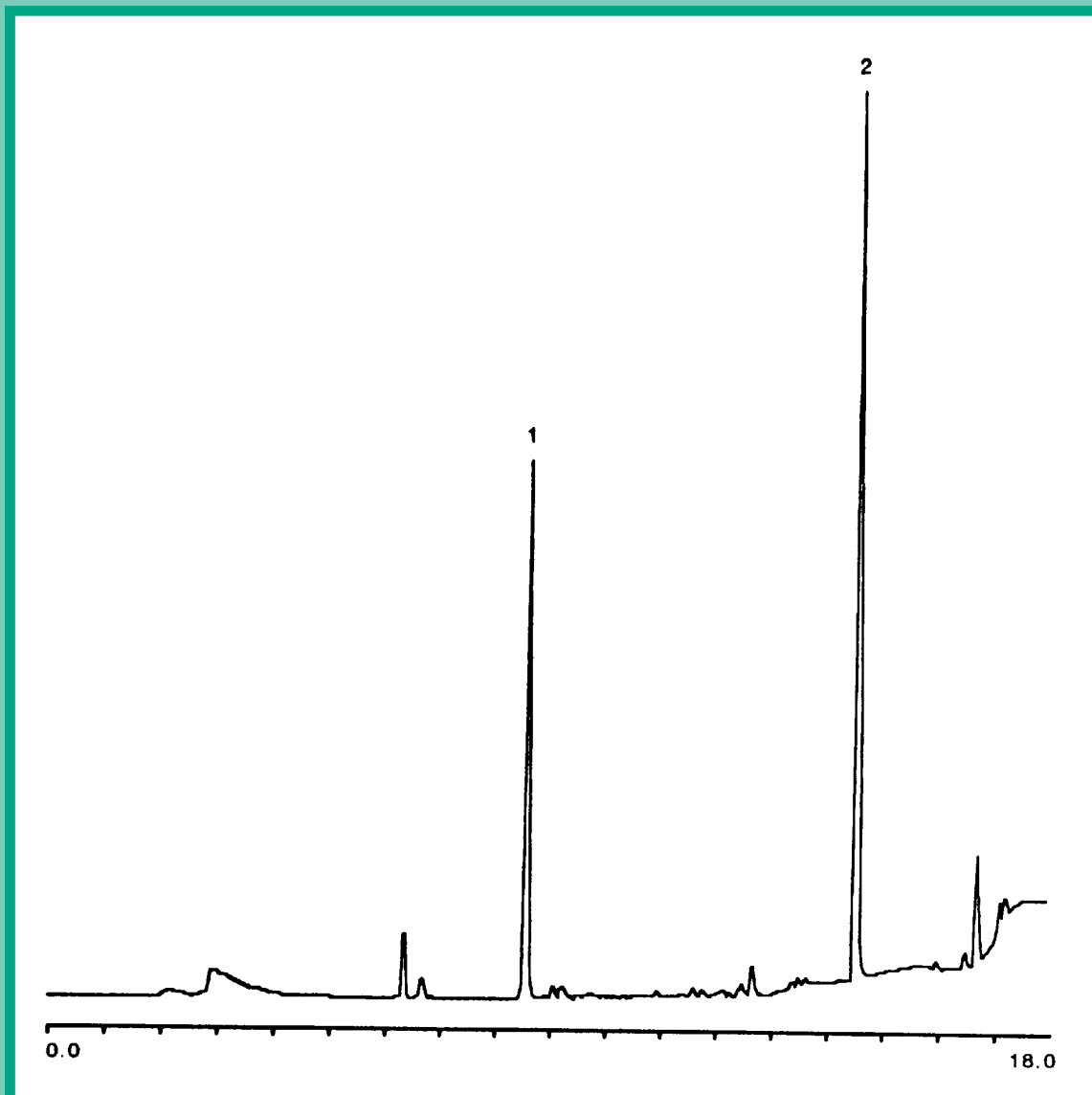
**EDB and DBCP
in Water**

Column: 007-1, Dimethylpolysiloxane
30M. x 0.32mm I.D. x 0.5µm film
Cat. No.: 007-1-30W-0.5F

Temperature: 40° (4 min. hold) (8°/min.) - 250°C
Injector: 220°C
Detector: 300°C, ECD
Carrier Gas: 1ml/min., Helium
Injection: 2µL of 5ppb extract

1. 1,2-dibromoethane

2. 1,2-dibromo-3-chloropropane



QUADREX



PO Box 3881, Woodbridge, CT 06525 • (203) 393-3112 • FAX (203) 393-0391
TOLLFREE: 800-275-7033 • E-MAIL: tech@quadrexcorp.com • WEB: www.quadrexcorp.com