



GC CAPILLARY COLUMN APPLICATIONS: Environmental

**EPA
Method
502.2
Drinking
Water**

COLUMN: 007-502, Cyanopropyl Phenyl Methylpolysiloxane
75M. x 0.53mm I.D. x 2.5µm film
Cat. No.: 007-502-75V-2.5F

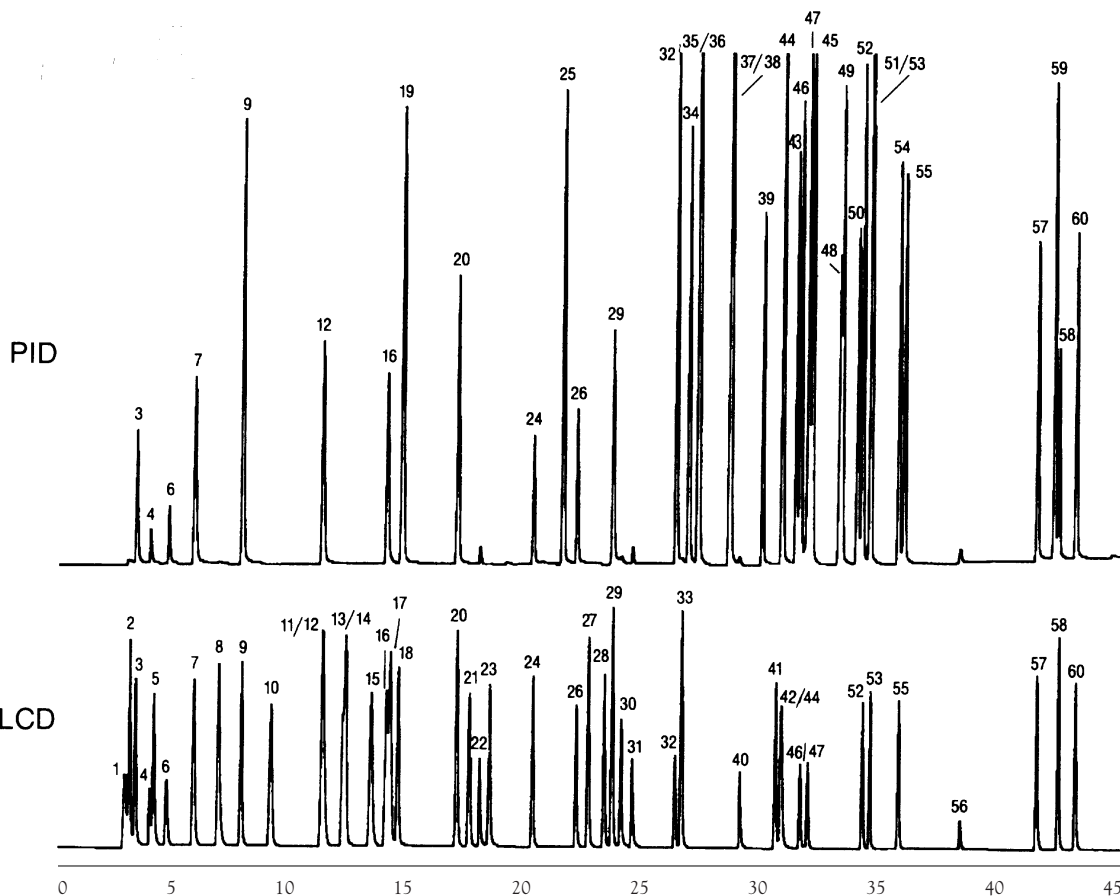
Temperature: 35° (10 min. hold) (4°/min.) - 280°C
(5 min. hold)

Carrier Gas: 10 ml/min., Helium

Purge: 11 min.

Trap Sampling: Tenax/Silica/Charcoal Trap

- | | | | |
|-------------------------------|-------------------------------|-------------------------------|--------------------------------------|
| 1. dichlorofluoromethane | 17. carbon tetrachloride | 33. 1,1,1,2-tetrachloroethane | 49. 1,2,4-trimethylbenzene |
| 2. chloromethane | 18. 1,2-dichloroethane | 34. ethylbenzene | 50. sec-butylbenzene |
| 3. vinyl chloride | 19. benzene | 35. m-xylene | 51. p-isopropyltoluene |
| 4. bromomethane | 20. trichloroethylene | 36. p-xylene | 52. 1,3-dichlorobenzene |
| 5. chloroethane | 21. 1,2-dichloropropane | 37. styrene | 53. 1,4-dichlorobenzene |
| 6. trichlorofluoromethane | 22. dibromomethane | 38. o-xylene | 54. butylbenzene |
| 7. 1,1-dichloroethylene | 23. bromodichloromethane | 39. isopropylbenzene | 55. 1,2-dichlorobenzene |
| 8. methylene chloride | 24. cis-1,3-dichloropropene | 40. bromoform | 56. 1,2-dibromo-3-chloro-
propane |
| 9. trans 1,2-dichloroethylene | 25. toluene | 41. 1,1,2,2-tetrachloroethane | 57. 1,2,4-trichlorobenzene |
| 10. 1,1-dichloroethane | 26. trans 1,3-dichloropropene | 42. 1,2,3-trichloropropane | 58. naphthalene |
| 11. 2,2-dichloropropane | 27. 1,1,2-trichloroethane | 43. bromobenzene | 59. hexachlorobutadiene |
| 12. cis 1,2-dichloroethylene | 28. 1,3-dichloropropane | 44. propylbenzene | 60. 1,2,3-trichlorobenzene |
| 13. bromochloromethane | 29. tetrachloroethylene | 45. 2-chlorotoluene | |
| 14. chloroform | 30. dibromochloromethane | 46. 4-chlorotoluene | |
| 15. 1,1,1-trichloroethane | 31. ethylene dibromide | 47. 1,3,5-trimethylbenzene | |
| 16. 1,1-dichloropropane | 32. chlorobenzene | 48. tert-butylbenzene | |



PO Box 3881, Woodbridge, CT 06525 • (203) 393-3112 • FAX (203) 393-0391
TOLLFREE: 800-275-7033 • E-MAIL: tech@quadrexcorp.com • WEB: www.quadrexcorp.com

QUADREX

