



GC CAPILLARY COLUMN

APPLICATIONS: Clinical/ Toxicological

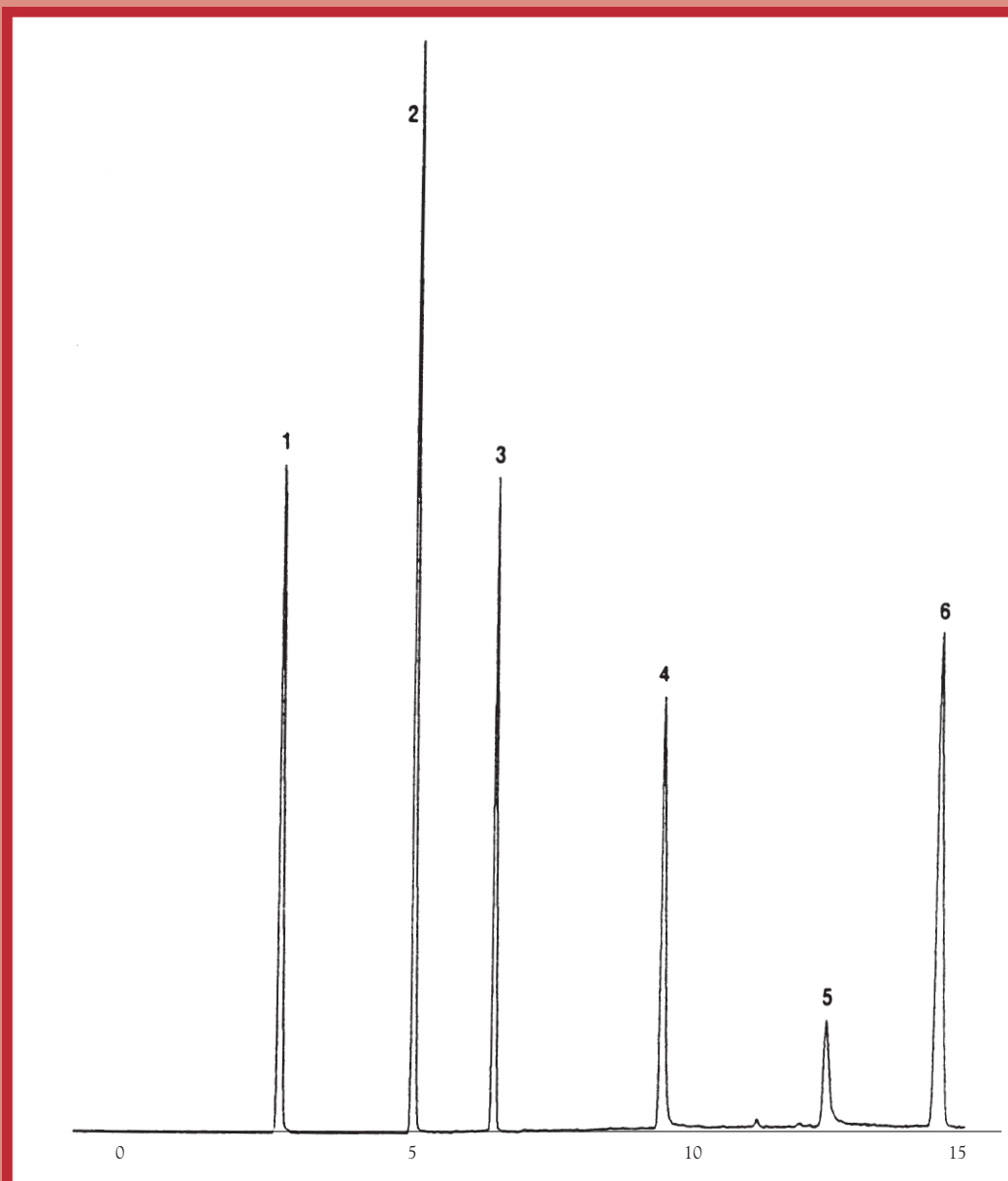
Drug Mix

COLUMN: 007-1701, (14% Cyanopropylphenyl)
Methylpolysiloxane
30M. x 0.25mm I.D. x 0.25µm film
Cat. No.: 007-1701-30-0.25F

Temperature: 120° (20°C/min.) - 200°C - (10°/min.) - 290°C
Injector: 250°C
Detector: MSD, Interface temp.: 290°C

1. caffeine
2. methadone
3. cocaine

4. codeine
5. 6-monoacetylmorphine
6. diacetylmorphine (heroin)



QUADREX



PO Box 3881, Woodbridge, CT 06525 • (203) 393-3112 • FAX (203) 393-0391
TOLLFREE: 800-275-7033 • E-MAIL: tech@quadrexcorp.com • WEB: www.quadrexcorp.com