



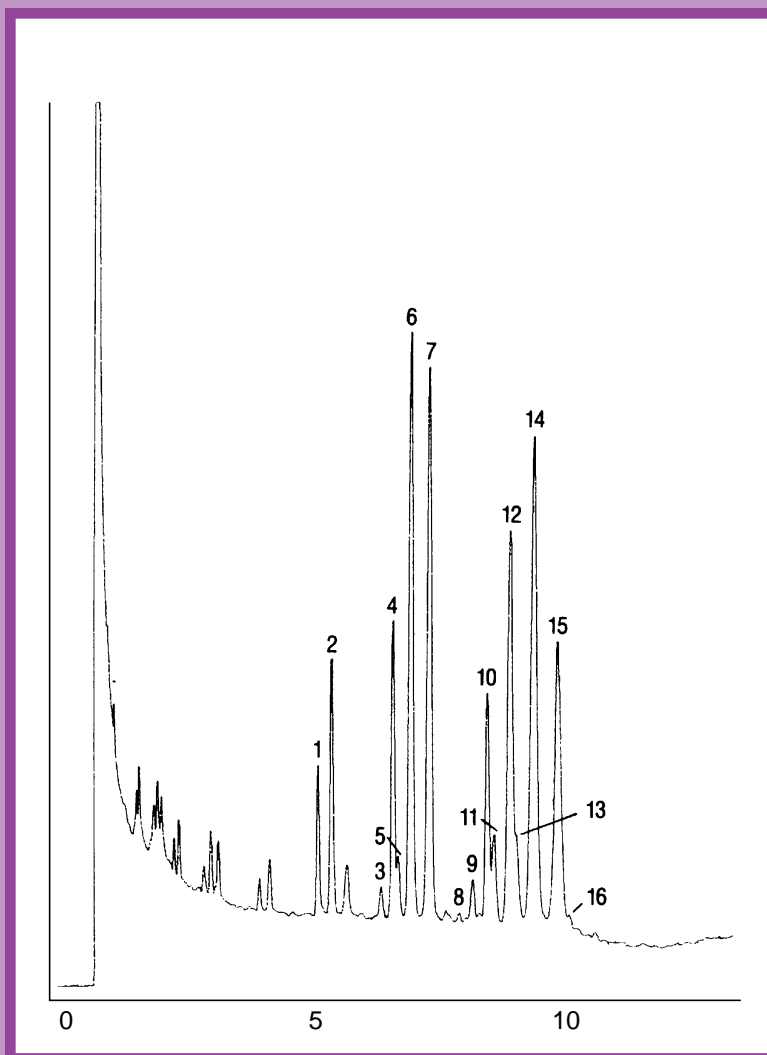
# GC CAPILLARY COLUMN APPLICATIONS: Triglycerides

## Corn Oil

**COLUMN:** 400-65HT, (65% Phenyl)  
Methylpolysiloxane - Aluminum-Clad  
15M. x 0.25mm I.D. x 0.1µm film  
Cat. No.: 400-65HT-15-0.1F

**Temperature:** 350° (0.5 min. hold) (1°/min.) - 365°C  
**Injector:** 400°C  
**Detector:** 400°C, FID  
**Carrier Gas:** 35 cm/sec., Helium

- |        |        |         |          |
|--------|--------|---------|----------|
| 1. pop | 5. pls | 9. soo  | 13. sll  |
| 2. plp | 6. plo | 10. ooo | 14. oll  |
| 3. pos | 7. pll | 11. slo | 15. lll  |
| 4. poo | 8. sos | 12. olo | 16. llln |



**QUADREX**



PO Box 3881, Woodbridge, CT 06525 • (203) 393-3112 • FAX (203) 393-0391  
TOLLFREE: 800-275-7033 • E-MAIL: tech@quadrexcorp.com • WEB: www.quadrexcorp.com