



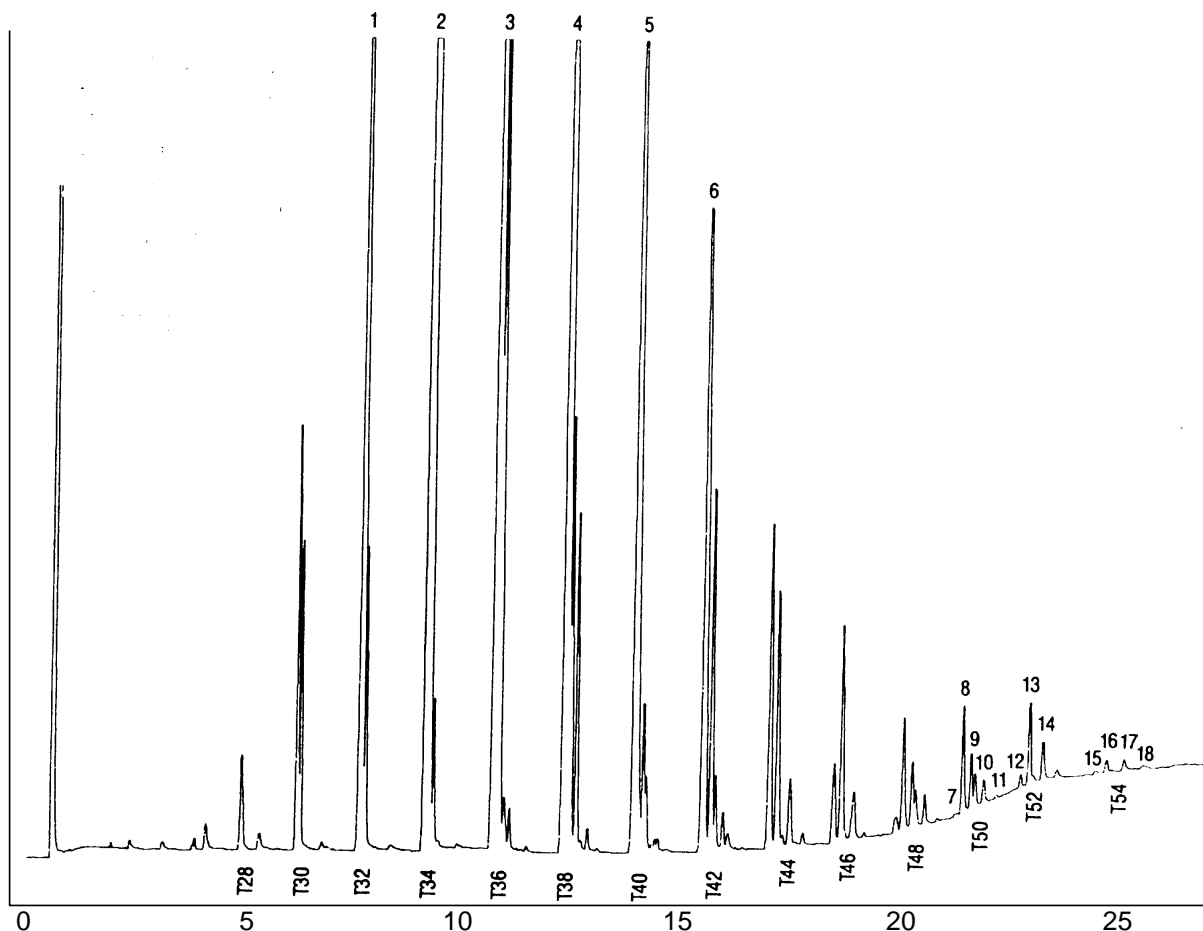
# GC CAPILLARY COLUMN APPLICATIONS: Triglycerides

## Coconut Oil

**COLUMN:** 400-65HT, (65% Phenyl)  
Methylpolysiloxane - Aluminum-Clad  
15M. x 0.25mm I.D. x 0.1µm film  
Cat. No.: 400-65HT-15-0.1F

**Temperature:** 250° (5°/min.) - 365°C  
**Injector:** 370°C  
**Detector:** 400°C, FID  
**Carrier Gas:** 35 cm/sec., Helium

- |           |              |         |         |
|-----------|--------------|---------|---------|
| 1. CyLaLa | 6. MMM       | 11. mlo | 16. soo |
| 2. CLaLa  | 7. pps       | 12. pos | 17. ooo |
| 3. LaLaLa | 8. pop & mos | 13. poo | 18. olo |
| 4. LaLAM  | 9. moo       | 14. plo |         |
| 5. LaMM   | 10. plp      | 15. sos |         |



# QUADREX



PO Box 3881, Woodbridge, CT 06525 • (203) 393-3112 • FAX (203) 393-0391  
TOLLFREE: 800-275-7033 • E-MAIL: tech@quadrexcorp.com • WEB: www.quadrexcorp.com