



# GC CAPILLARY COLUMN APPLICATIONS: Steroids

## Cholesterol Esters

**COLUMN:** 007-23, Cyanpropyl Methylpolysiloxane  
10M. x 0.25mm I.D. x 0.25µm film  
Cat. No.: 007-23-10-0.25F

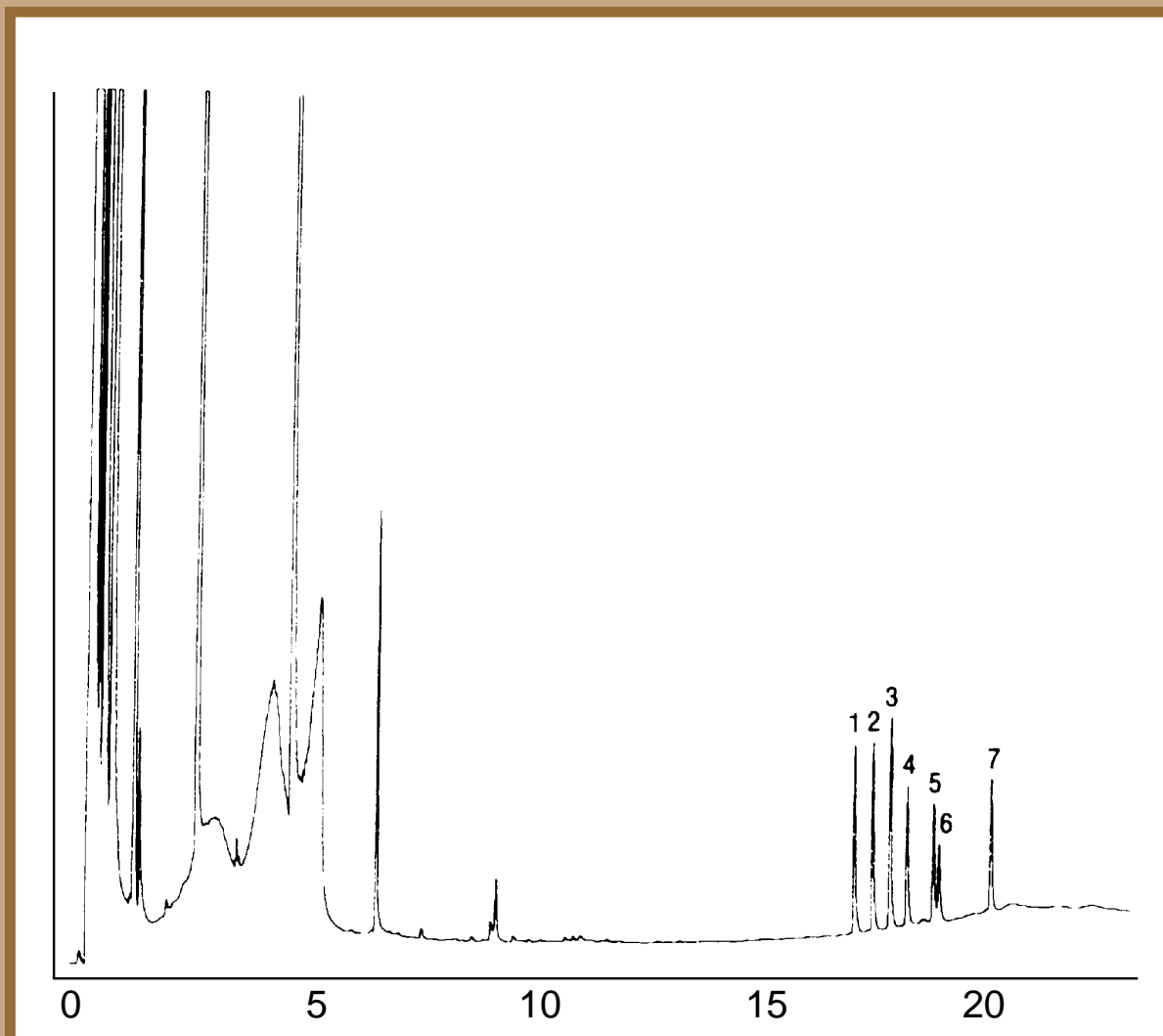
**Temperature:** 80° (20°/min.) - 170° - (10°/min.) - 300°C

**Injector:** 270°C

**Detector:** 300°C, FID

**Carrier Gas:** 34 cm/sec., He.

- |                               |                               |
|-------------------------------|-------------------------------|
| 1. cholesteryl laurate        | 5. cholesteryl palmitelaidate |
| 2. cholesteryl tridecanoate   | 6. cholesteryl heptadecanoate |
| 3. cholesteryl myristate      | 7. cholesteryl linoelaidate   |
| 4. cholesteryl pentadecanoate |                               |



**QUADREX**

PO Box 3881, Woodbridge, CT 06525 • (203) 393-3112 • FAX (203) 393-0391  
TOLLFREE: 800-275-7033 • E-MAIL: tech@quadrexcorp.com • WEB: www.quadrexcorp.com

