



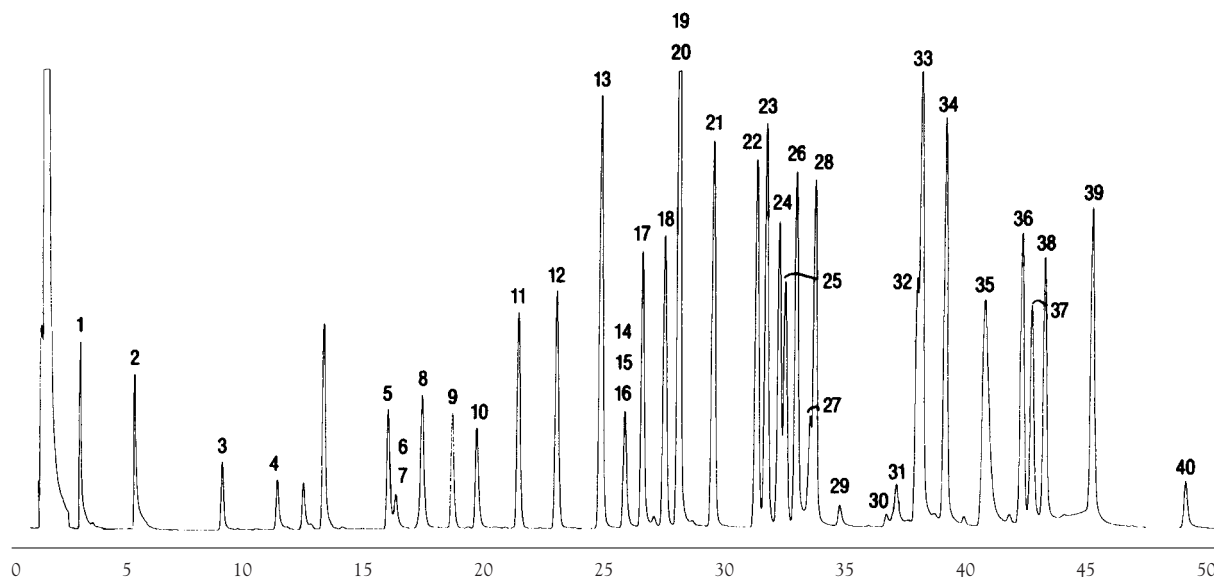
GC CAPILLARY COLUMN APPLICATIONS: Environmental

Chlorinated Pesticides

Column: 007-1701, (14% Cyanopropylphenyl) Methylpolysiloxane
30M. x 0.53mm I.D. x 1.0µm film
Cat. No.: 007-1701-30V-1.0F

Temperature: 140°(2 min. hold) (3°/min.) - 270°C
Injector: 250°C
Detector: 320°C, ECD
Carrier Gas: 6 ml/min., Helium

- | | | |
|------------------------------|------------------------|------------------------|
| 1. DBCP | 15. trans-nonachlor | 29. perthane |
| 2. hexachlorocyclopentadiene | 16. chlordane | 30. chloropropylate |
| 3. etridiazole | 17. β-BHC | 31. nirtofen |
| 4. chloroneb | 18. isodrin | 32. p,p'-DDD |
| 5. hexachlorobenzene | 19. g-BHC | 33. endosulfan II |
| 6. diallate | 20. DCPA | 34. p,p'-DDT |
| 7. propachlor | 21. heptachlor epoxide | 35. endrin aldehyde |
| 8. trifluralin | 22. endosulfan I | 36. mirex |
| 9. a-BHC | 23. g-chlordane | 37. endosulfan sulfate |
| 10. PCNB | 24. a-chlordane | 38. methoxychlor |
| 11. g-BHC | 25. endrin | 39. endrin ketone |
| 12. heptachlor | 26. p,p'-DDE | 40. trans-permethrin |
| 13. aldrin | 27. captan | |
| 14. alachlor | 28. dieldrin | |



QUADREX



PO Box 3881, Woodbridge, CT 06525 • (203) 393-3112 • FAX (203) 393-0391
TOLLFREE: 800-275-7033 • E-MAIL: tech@quadrexcorp.com • WEB: www.quadrexcorp.com