

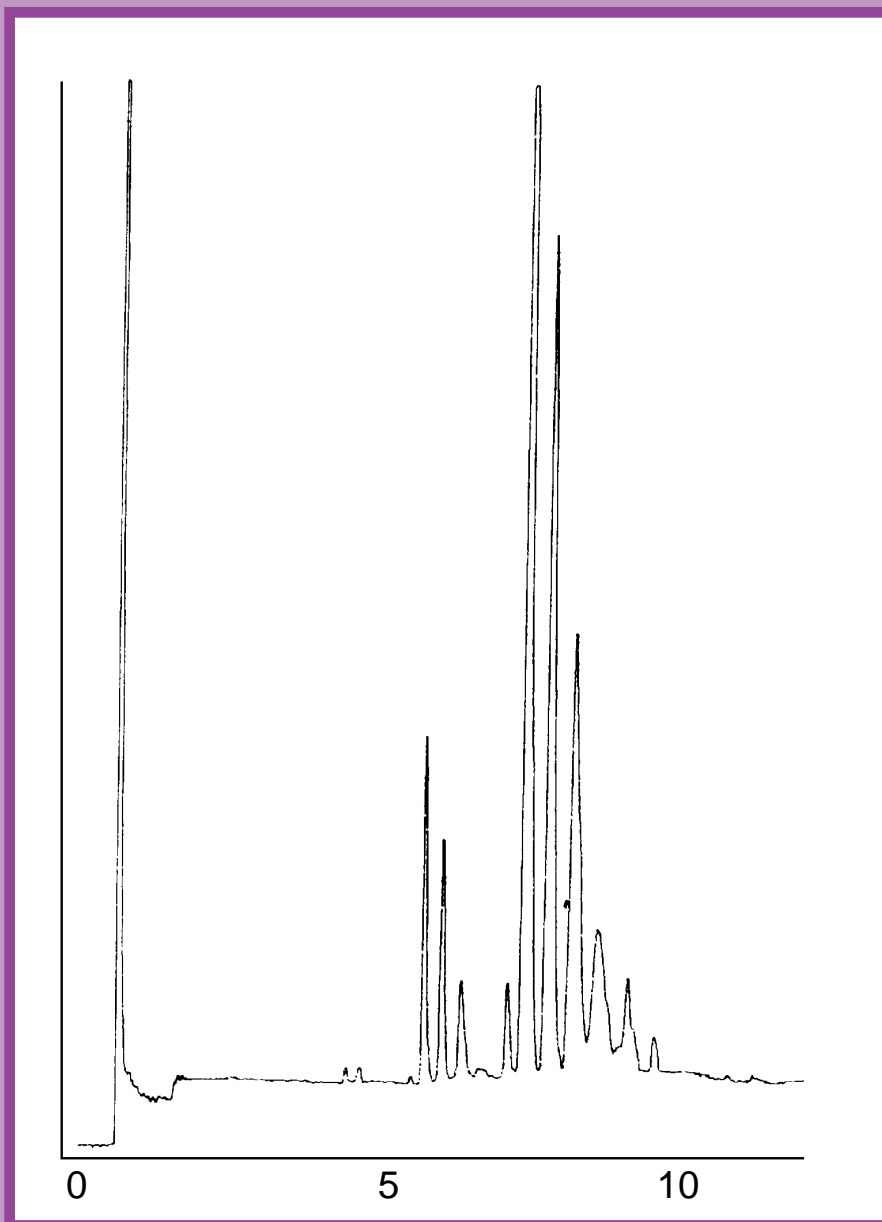


# GC CAPILLARY COLUMN APPLICATIONS: Triglycerides

## Canola Oil

**COLUMN:** 400-65HT, (65% Phenyl)  
Methylpolysiloxane - Aluminum-Clad  
15M. x 0.25mm I.D. x 0.1µm film  
Cat. No.: 400-65HT-15-0.1F

**Temperature:** 355° (1 min. hold) (1°/min.) - 365°C  
**Injector:** 400°C  
**Detector:** 400°C, FID  
**Carrier Gas:** 35 cm/sec., Helium



**QUADREX**



PO Box 3881, Woodbridge, CT 06525 • (203) 393-3112 • FAX (203) 393-0391  
TOLLFREE: 800-275-7033 • E-MAIL: tech@quadrexcorp.com • WEB: www.quadrexcorp.com